

---

**4. INFORMATION ON OUR GROUP (Cont'd)**

---

**(c) We have Business Diversity to Mitigate Over-dependency in any One Area**

Our business diversity resulting from operating in two (2) core business areas namely shipping and shipbuilding reduces over-dependency in only one (1) business area. In the event that there is a slowdown in one (1) sector that affects one (1) of our business areas, we have the other business to sustain our Group's overall business.

In addition, our business diversity is also reflected by the many industries that we serve. Some of the end-users of our services include, among many others, manufacturing, construction, oil and gas, chemicals, mining, forestry, agriculture and transportation industries.

We also serve many markets, which provide additional diversity to mitigate against over-dependency on any one (1) market. For the FYE 30 June 2009, we serve the local Malaysian market as well as overseas markets including Singapore and many countries in the Middle East.

**(d) We Own a Large Fleet of Vessels**

As at LPD, we have 245 vessels owned by our subsidiary and associate companies to undertake domestic and international shipping. In 2009, we ranked first in Malaysia based on number of vessels owned and used for the transportation of goods for third parties (*Source: Independent Assessment of the Shipping and Shipbuilding Industries prepared by Vital Factor*). Our large number of vessels provides us with the advantage of being able to meet customers' needs for transporting large volume of goods in a relatively short period of time.

Our large number of vessels also facilitates business flexibility where we can deploy vessels based on different arrangements for example, short-term or long-term time charter, day rates, per voyage rates and by volume of cargo. This flexibility enables us to address many different business opportunities to maximise from our large fleet of vessels. Our large fleet of vessels also provides us with the basis for continuing growth.

**(e) We have Economies of Scale**

Our large business operations provide us with significant economies of scale. As at LPD, our subsidiary and associate companies operated 245 vessels and we successfully constructed over 250 vessels since the commencement of our shipbuilding operations in 1986.

These economies of scale enable us to spread our fixed and operating costs across a large number of vessels that we operate, as well as the vessels that we built. This is particularly pertinent in terms of head office personnel and operating facilities.

Our large fleet size and number of vessels that we built provide us with a stronger bargaining power to obtain better commercial terms from suppliers including product and service costs, credit terms, logistic arrangements and others.

Economies of scale represent a strong competitive advantage for us as it helps improve our profit margin.

---

**4. INFORMATION ON OUR GROUP (Cont'd)**

---

**(f) We have Lower Shipping Operating Cost**

Within our Group, we provide ship repair and maintenance services to third parties as well as for our own vessels. Our own in-house maintenance and repair enable us to have a lower operating cost for our shipping operations compared to using external service providers for maintenance and repair.

In addition, our own in-house ship repair and maintenance services enable us to control the timing of undertaking these repair and maintenance services while our vessels are docking or undergoing loading and unloading. This reduces the downtime for our shipping operations, which increases our productivity.

With our in-house ship repairing and maintenance we are able to undertake more regular and detailed repair and maintenance works, which increases the lifespan of our vessels.

Our lower shipping operating cost would provide us with a competitive advantage either enabling us to be price competitive or obtaining higher profit margin.

**(g) We have Lower Shipping Asset Cost**

As an integrated shipping and shipbuilding operator, approximately 90% of our current shipping vessels are constructed in-house by us. As such, the costs of our fleet of vessels are lower compared to operators who normally purchase or lease their vessels.

Our lower asset cost enables us to own more vessels for a given level of investments, and at the same time enable us to be more price competitive or obtain a higher profit margin resulting from lower depreciation or financing charges for our shipping assets.

**(h) We Provide Domestic and International Shipping Services**

We provide both domestic shipping services within Malaysian waters, as well as international shipping services especially around the Middle East areas. Our domestic and international shipping services provide us with more growth opportunities as compared to purely servicing either the domestic or international shipping routes alone.

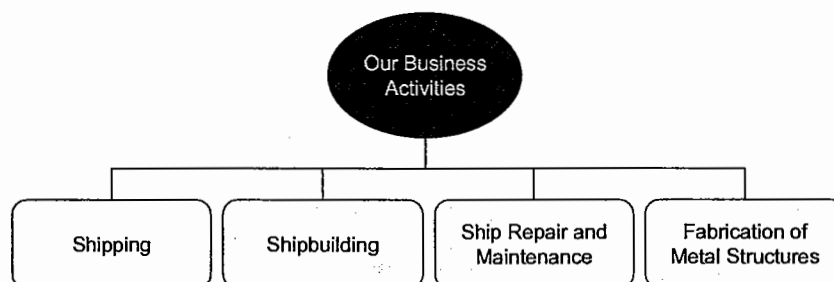
In addition, it also provides us with the business diversity to minimise over-dependency on any one or small number of markets.

**[THE REST OF THIS PAGE HAS BEEN INTENTIONALLY LEFT BLANK]**

#### 4. INFORMATION ON OUR GROUP (Cont'd)

##### 4.2.2 Overview of Business Activities

Our business activities are depicted as follows:-



In Malaysia, we operate from our head office, shipping office and shipbuilding yards in Sarawak. In addition, we also have five (5) branch offices which are located in Port Klang, Kuching, Miri, Bintulu and Kota Kinabalu in Malaysia. As for our Middle East operations, our office is located in RAK.

Through our subsidiary and associate companies, our shipping operations provide domestic and international services. International shipping includes Malaysia registered vessels operating in international waters, and UAE registered vessel operating in the Middle East.

The breakdown of our Group's revenue by business activities for the FYE 30 June 2009 and the 5-month FPE 30 November 2009 are as follows:-

Revenue	FYE 30 June 2009		5-month FPE 30 November 2009	
	RM'000	%	RM'000	%
<b>Shipping<sup>#</sup></b>	<b>423,593</b>	<b>62.9</b>	<b>182,167</b>	<b>66.1<sup>^</sup></b>
- International shipping	235,053	34.9	92,473	33.6
- Domestic shipping	188,540	28.0	89,694	32.6
<b>Shipbuilding</b>	<b>164,858<sup>^</sup></b>	<b>24.5<sup>^</sup></b>	<b>82,186</b>	<b>29.8</b>
- Maintenance/work vessels	98,643	14.6	48,887	17.7
- Landing craft	32,638	4.8	-	-
- AHTs	27,002	4.0	33,299	12.1
- Others <sup>*</sup>	6,574	1.0	-	-
<b>Ship repair and maintenance</b>	<b>80,409</b>	<b>11.9</b>	<b>5,650</b>	<b>2.1</b>
<b>Fabrication of metal structures</b>	<b>4,627</b>	<b>0.7</b>	<b>5,499</b>	<b>2.0</b>
<b>TOTAL</b>	<b>673,487</b>	<b>100.0</b>	<b>275,502</b>	<b>100.0</b>

Notes:-

Total Group revenue does not include associate companies' revenue and are consolidated after elimination of inter-company transactions.

# Include a small proportion of ship chartering business

\* Others including tugboats and barges

<sup>^</sup> Total does not add-up due to rounding

#### 4. INFORMATION ON OUR GROUP (Cont'd)

For the FYE 30 June 2009, our shipping operations accounted for 62.9% of our total revenue, amounting to RM423.6 million. Of this, international shipping contributed the largest proportion accounting for 34.9% of our revenue, while 28.0% of our revenue was derived from domestic shipping operations. Similarly, for the 5-month FPE 30 November 2009, our shipping operations accounted for 66.1% of our total revenue, amounting to RM182.2 million. Of this, international shipping contributed the largest proportion accounting for 33.6% of our revenue, while 32.6% of our revenue was derived from domestic shipping operations.

Our domestic shipping operations are carried out in Malaysia waters between Peninsular Malaysia and, Sabah and Sarawak. As for our international shipping operations, they cover two scenarios:-

- from Malaysian ports to overseas countries such as Singapore, Japan, Indonesia, Brunei, Thailand, Vietnam, Taiwan, China, Korea and Philippines;
- from RAK port to neighbouring countries in the Middle East, including Qatar, Bahrain, and the UAE, Saudi Arabia and Oman.

Within our shipping operations, revenue derived from our chartering business accounted for 4.0% of our total revenue, amounting to RM27.0 million for the FYE 30 June 2009. For the 5-month FPE 30 November 2009, revenue derived from our chartering business amounted to RM7.0 million or 2.5% of our total revenue.

Our shipbuilding operations accounted for 24.5% of our total revenue, amounting to RM164.9 million for the FYE 30 June 2009. Within shipbuilding operations, our revenue was mainly derived from the construction of oil and gas offshore support vessels, including maintenance/work vessels, landing crafts and AHTs, which accounted for 14.6%, 4.8% and 4.0% respectively of our total revenue. The remainder 1.0% of total revenue was derived from the construction of tugboats and barges.

For the 5-month FPE 30 November 2009, our shipbuilding operations accounted for RM82.2 million or 29.8% of our total revenue. Of this, revenue derived from the construction of maintenance/work vessels and AHTs accounted for 17.7% and 12.1% of our total revenue respectively.

For the FYE 30 June 2009, provision of ship repair and maintenance services accounted for 11.9% of our total revenue, amounting to RM80.4 million. Whilst the remaining 0.7% of our total revenue was derived from the fabrication of metal structures.

Provision of ship repair and maintenance services accounted for RM5.7 million or 2.1% of our total revenue, whilst RM5.5 million or 2.0% our total revenue were derived from our fabrication of metal structures for the 5-month FPE 30 November 2009.

##### (A) SHIPPING OPERATIONS

One of our core businesses is in shipping, which is undertaken by the following subsidiary and associate companies:-

###### Companies in Malaysia

- Shin Yang Shipping;
- Shinline;
- Thailine; and
- Danum Shipping

###### Companies in UAE

- Trelco FZC;
  - \*Marsol LLC;
  - \*Al Ghaith LLC; and
  - \*Deena LLC
- \*Associate company

#### 4. INFORMATION ON OUR GROUP (Cont'd)

For the FYE 30 June 2009, our shipping operations contributed RM423.6 million, which accounted for 62.9% of our total revenue. For the 5-month FPE 30 November 2009, our shipping operations accounted for 66.1% of our total revenue, amounting to RM182.2 million

Our revenue derived from shipping operations increased from RM352.1 million for the FYE 30 June 2007 to RM423.6 million for the FYE 30 June 2009. This represented an average growth of 9.7% per annum between the financial years ended 30 June 2007 and 30 June 2009.

Our shipping operations are primarily involved in the following activities:-

- Transportation of dry bulk;
- Transportation of liquid bulk;
- Transportation of containers;
- Vessel chartering;
- Other ancillary services such as dredging and sand extraction services.

Our shipping operations are supported by a fleet of 245 vessels with a total of approximately 300,000 GRT owned by our subsidiary and associate companies. These 245 vessels ply domestic and international sea routes.

As at LPD, the number and types of vessels owned by our subsidiary and associate companies in Malaysia and UAE were as follows:-

Type of vessels	Length of vessel (Metre)	Total tonnage (GRT)	Number of Vessels Owned by our Subsidiary and Associate Companies		
			Malaysia	UAE	TOTAL
Tugboats * ^	13 - 35	15,605	80#	28	108
Barges * ^	29 - 111	192,701	79	26	105
Cargo vessels ^	17 - 107	73,570	18	-	18
Landing crafts ^	47 - 95	14,344	6	-	6
Oil Tankers (small-scale) ^	19 - 31	189	3	-	3
Container vessels ^	79	5,124	2	-	2
Crew boats	18 - 30	165	2&	-	2
Chemical vessel	73	1,702	1	-	1
<b>TOTAL</b>		<b>303,400</b>	<b>191</b>	<b>54</b>	<b>245</b>

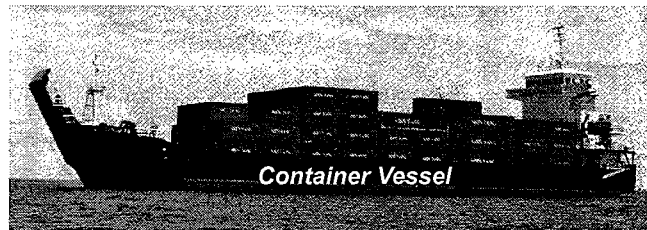
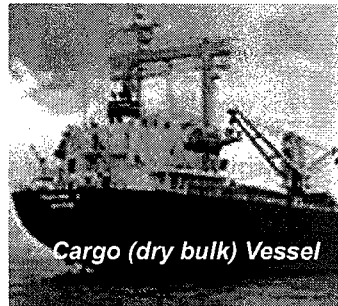
**Notes:-**

- ^ Please refer to the "Glossary of Technical Terms" for the functions of these vessels.  
 \* Barges require tugboats to move, as barges do not have any on-board power to propel itself. Commonly one tugboat is used to pull one barge. In some instances, one tugboat may be used to pull more than one barge, especially smaller barges.  
 # 1 unit currently under repair  
 & Currently under repair for improvement modification

[THE REST OF THIS PAGE HAS BEEN INTENTIONALLY LEFT BLANK]

#### 4. INFORMATION ON OUR GROUP (Cont'd)

Some of the vessels owned by our subsidiary and associate companies used in our shipping operations are as follows:-



A small part of our shipping operations also include chartering our vessels to third party customers. For the FYE 30 June 2009, revenue derived from our chartering business accounted for 4.0% of our total revenue, amounting to RM27.0 million. For the 5-month FPE 30 November 2009, revenue derived from our chartering business amounted to RM7.0 million or 2.5% of our total revenue.

##### (a) Domestic Shipping

For domestic shipping, we mainly undertake short sea trips plying between ports in Peninsular and, Sabah and Sarawak. For the FYE 30 June 2009, our revenue derived from domestic shipping accounted for 28.0% of our revenue, amounting to RM188.5 million. For the 5-month FPE 30 November 2009, 32.6% of our revenue was derived from domestic shipping operations, amounting to RM89.7 million.

As at LPD, our domestic shipping operations were supported by 149 of our own vessels comprising the following types of vessels:-

Type of vessels	Number of Vessels for Domestic Shipping
Tugboats	70*
Barges	73
Oil Tankers (small-scaled)	3
Container vessel	1
Crew boats	2 <sup>#</sup>
<b>TOTAL</b>	<b>149</b>

Notes:-

\* 1 unit currently under repair

# Currently under repair for improvement modification

#### 4. INFORMATION ON OUR GROUP (Cont'd)

We provide domestic shipping services calling at the following ports in Malaysia, including:-

Bintulu, Sarawak;	-	Miri, Sarawak;
Kuching, Sarawak;	-	Sibu, Sarawak;
Labuan;	-	Sandakan, Sabah;
Tawau, Sabah,	-	Port Klang, Selangor
Penang, Penang;	-	Kuantan, Pahang;
Kemaman, Terengganu.		

We have capabilities to transport a wide range of bulk cargoes comprising dry and liquid bulk such as:-

- timber products including timber logs, sawn timber, plywood, veneer;
- quarry products including cement, sand, aggregates, clinkers and block stones;
- petrochemical and chemical products including lubricants, diesel fuel, glue, and methanol;
- iron and steel products including pig iron, steel plates, steel pipes and secondary steel products;
- others including palm kernel, flour, light and heavy machinery and equipment, and spare parts.

Some of our domestic shipping activities are depicted as follows:-

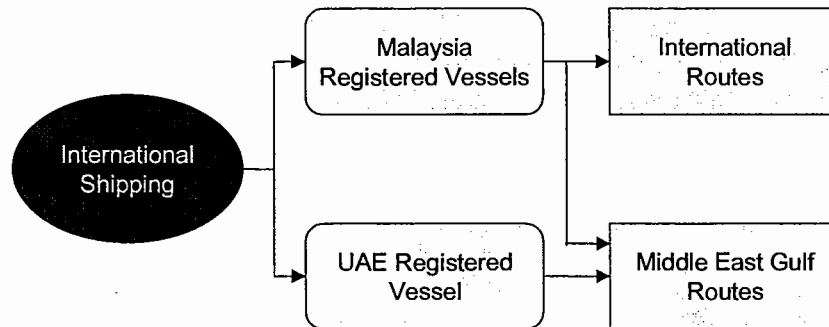


[THE REST OF THIS PAGE HAS BEEN INTENTIONALLY LEFT BLANK]

#### 4. INFORMATION ON OUR GROUP (Cont'd)

##### (b) International Shipping

Our international shipping activities comprise Malaysia and UAE registered vessels plying the international route.



##### International Routes

We have a fleet of 42 Malaysian registered vessels dedicated to international routes and they call at various ports in the following countries, including:-

- Brunei
- Hong Kong
- Indonesia
- Korea
- Philippines
- Singapore
- Thailand
- China
- India
- Japan
- Papua New Guinea
- Russia
- Taiwan
- Vietnam

As at LPD, the number and types of Malaysia registered vessels for our international routes were as follows:-

Type of vessels	Number of Malaysian Registered Vessels for International Routes
Tugboats	10
Barges	6
Landing crafts	6
Container vessels	1
Cargo vessels	18
Chemical vessel	1
<b>TOTAL</b>	<b>42</b>

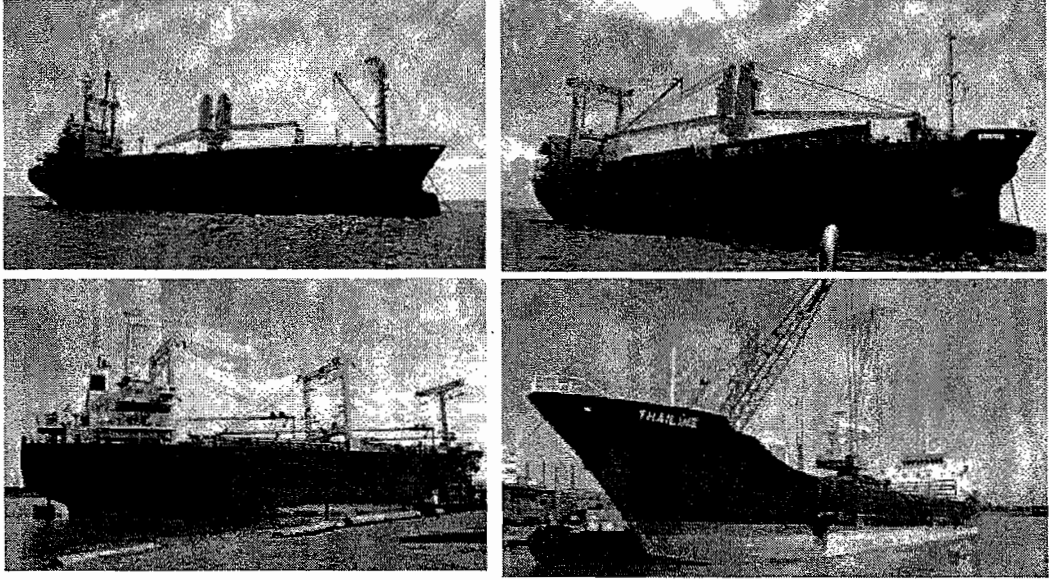
Currently, most of our Malaysian registered vessel shipments to overseas countries are for transporting timber products including timber logs, plywood and veneer, sawntimbers, and palm kernel. In addition, some of the inbound cargo for our international routes includes iron and steel products, and machinery and equipment.

[THE REST OF THIS PAGE HAS BEEN INTENTIONALLY LEFT BLANK]



#### 4. INFORMATION ON OUR GROUP (Cont'd)

Some of the vessels used for our international routes are depicted as follows:-



#### Middle Eastern Routes

We have a fleet of 53 Malaysian registered vessels and 1 UAE registered vessel comprising 28 tugboats and 26 barges owned by our subsidiary and associate companies to support our shipping operation in the Middle East. Our vessels ply the Middle East region servicing some of the major ports in the Middle East as follows:-

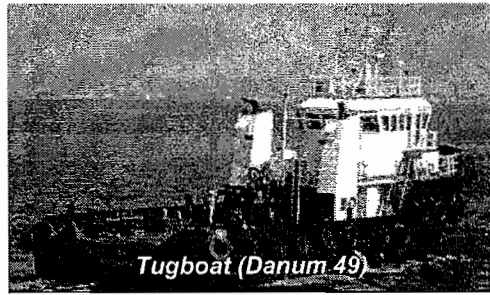
- Saudi Arabia;
- Qatar (including Umm Saied port, Doha port, and Ras Laffan port)
- UAE (including Saqr port, RAK port, and Fujairah port);
- Oman;
- Bahrain.

Our shipping operations in the Middle East are focused on transporting quarry products such as aggregates, block stones and rocks for the building and construction industry.

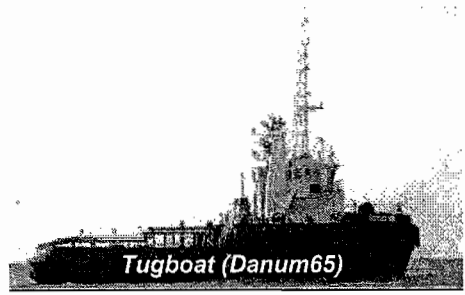
**[THE REST OF THIS PAGE HAS BEEN INTENTIONALLY LEFT BLANK]**

**4. INFORMATION ON OUR GROUP (Cont'd)**

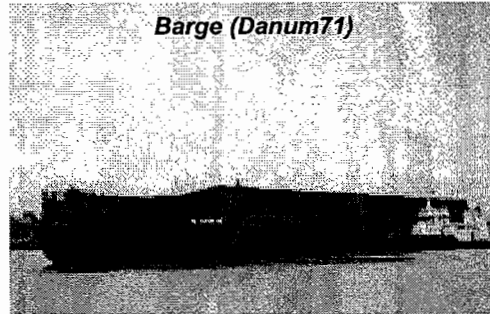
Some of vessels used for our shipping operations in Middle East are depicted below:-



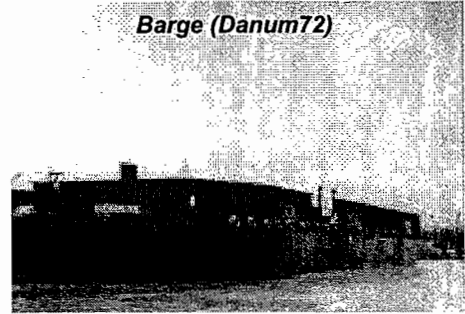
*Tugboat (Danum 49)*



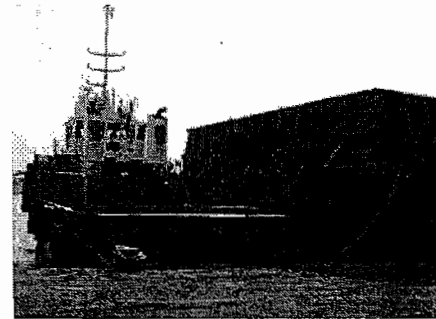
*Tugboat (Danum 65)*



*Barge (Danum 71)*



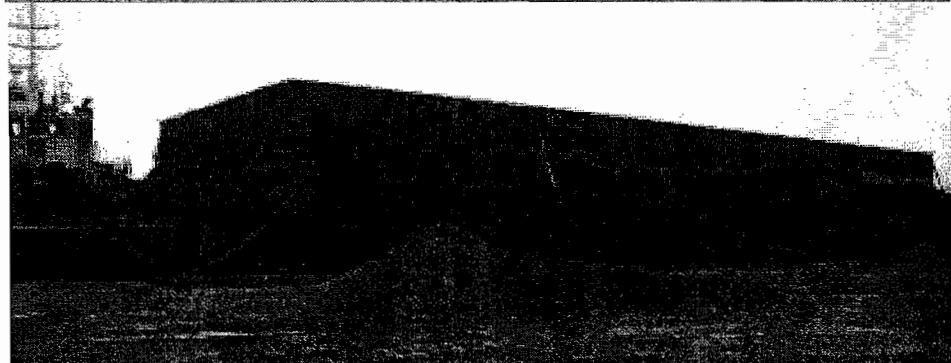
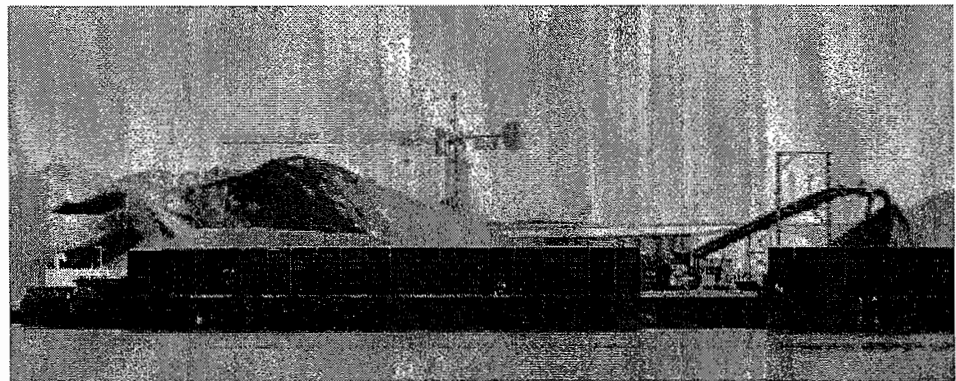
*Barge (Danum 72)*



*Tugboat and Barge*



*Loading of aggregates onto our barge*



*Loading of aggregates onto our barge*

#### 4. INFORMATION ON OUR GROUP (Cont'd)

For the FYE 30 June 2009, revenue from our international shipping accounted for 34.9% of our total revenue, amounting to RM235.1 million. For the 5-month FPE 30 November 2009, our international shipping accounted for RM92.5 million or 33.6% of our total revenue.

A small part of our international shipping operations also include chartering our vessels to external customers in the Middle East and India.

#### (B) SHIPBUILDING

We are also engaged in shipbuilding, which is undertaken by our subsidiary companies, Shin Yang Shipyard and Piasau Slipways.

Since the commencement of our shipbuilding business in 1986, we have successfully constructed over 250 vessels for both the overseas and local markets. Following are some of the types of vessels built by us:-

- tugboats;
- barges (including dumb barges or lighters, and hatch covered barges);
- AHT;
- landing crafts;
- cargo vessels (including coastal and ocean going cargo vessels);
- chemical vessels;
- oil tankers (small-scale);
- maintenance/work vessels;
- offshore support vessels (including supply vessels and utility vessels);
- crew boats;
- seismic vessels;
- ferries

We have also constructed the following types of navy vessels:-

- supply vessels;
- rescue boats;
- patrol vessels;
- navy training vessels

We have the capabilities to construct vessels in a range of sizes with DWT up to 15,000 for cargo vessels, and length up to 150 metres.

We built ships for external customers as well as for our shipping business:-

- As at LPD, we built approximately 90% of all our vessels for our shipping operations undertaken by our subsidiary and associate companies;
- For the FYE 30 June 2009, shipbuilding for third party customers amounted to RM164.9 million representing 24.5% of total Group revenue. For the 5-month FPE 30 November 2009, revenue derived from our shipbuilding for third party customers amounted to RM82.2 million or 29.8% of our total revenue.

We have three (3) shipbuilding yards located in Kuala Baram, Miri and one (1) shipbuilding yard in Bintulu in Sarawak with a total land area of approximately 266 acres.

In addition, we also intend to have two (2) additional shipbuilding yards in Tanjung Manis, Sarawak and RAK for future business expansion.

#### 4. INFORMATION ON OUR GROUP (Cont'd)

We commonly work with third-party naval architects for the vessel blueprints based on the specifications and requirements established together with our customers. As for vessels used for our own shipping operations, we also work from designs and specifications undertaken together with third-party naval architects.

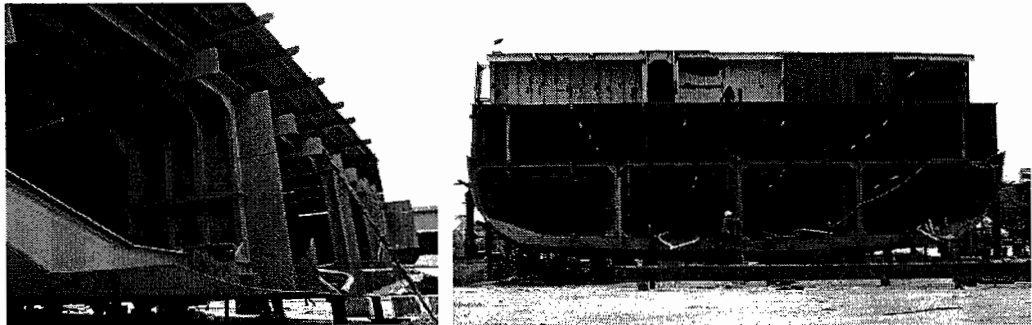
Based on the naval architect blueprint, we then develop a production plan to be used in the construction of the vessel. As the construction of the vessel requires various types and quantities of materials, parts, components, equipment and machinery undertaken by a workforce with different skills set, the production plan plays a critical role in ensuring a smooth construction process.

The production plan also provides the basis for controls, checks and supervision and the timing of supply of materials to ensure an effective and efficient process flow.

Some of the shipbuilding activities carried out by us include:-

- Hull and superstructure construction;
- Installation of various systems including propulsion and power system, and communication, navigation and surveillance systems;
- Installation of machinery and equipment;
- Interior fit-out;
- Painting and coating;
- Testing and commissioning;
- Launching

##### Construction of hull and superstructures



*Construction of Hull and Superstructure*

The hull and superstructures are mostly made of steel. We adopt modular construction technique for the construction of hull and superstructures, which form a major part of the entire vessel.

Some of the modular construction techniques applied by our shipbuilding team are as follows:-

- construct each module of the hull and superstructure separately at our shipbuilding yard at the same time;
- machining of metal parts such as marking, cutting, fitting and welding into various modules or blocks prior to the assembly process;
- pre-installation of machinery and equipment, piping systems, electrical cables, and other parts and components for each module within the hull prior to the welding of all the modules together;
- all the completed modules are assembled and welded together to form a complete hull and superstructure for the vessel.

#### 4. INFORMATION ON OUR GROUP (Cont'd)

##### Installation of Various Systems

###### - Propulsion and Power System Installation

We also undertake installation and integration of some propulsion and power systems during our construction process, which commonly comprise various machinery and equipment including marine engines, gas turbine engines, gearboxes, generator sets, propeller shaft, propeller, and steering control system.



###### - Communications, Navigation and Surveillance Systems

Communication systems are installed to enable the vessel to communicate with other vessels or land offices. Commonly, a large radio transmitter and receiver are used for communications.

We also integrate and install navigation systems into the vessel, which include gyrocompass for directional information, GPS device to provide precise information on the position and location of the vessel, Radio Direction and Ranging (RADAR) equipment used to locate nearby vessels and other objects and other equipment including depth sounders and auto pilot system.

The installation of surveillance system such as RADAR equipment and close circuit television (CCTV) system will provide the vessel with information on its surrounding area.

##### Installation of Machinery and Equipment

Installation of machinery and equipment into the vessel is based on specifications and requirements of different types of vessels and customer requirements.

We have in-house expertise to undertake installation and integration of various types of machinery and equipment, such as towing hook or towing winch systems for tugboat, winches, crane and open stern for AHTs and supply vessels, and installation of water pumps and nozzles for fire-fighting function.

##### Interior Fit-Out

We have the capability to provide an extensive range of interior fit-out works, from design to fabricating wooden furniture modules and installation of interior fittings.

We undertake all interior fit-outs including, among many others, furniture and furnishing, floor covering, air-conditioning, interior painting and polishing, and installation of wood deck.

##### Painting and Coating

We undertake painting and coating of the internal and external surface of the vessel.

A layer of anti-corrosive paint will form a physical barrier and isolate the metal surface from the environment, like seawater and air. Corrosion can weaken the hull as well as the steel structure. As for the portion of the hull that is submerged underwater, the surface is coated with anti-fouling paint to retard the growth of barnacles and other marine organisms. Growth of these marine organisms will eventually increase the drag on the hull, thus reducing the performance of the vessel.

#### 4. INFORMATION ON OUR GROUP (Cont'd)

##### Launching

The launch of the vessel will be undertaken, once all the modules and blocks are mounted and joint together. The vessel is launched from the berth, where the dock is filled with water to float the vessel and the vessel slides into the sea.

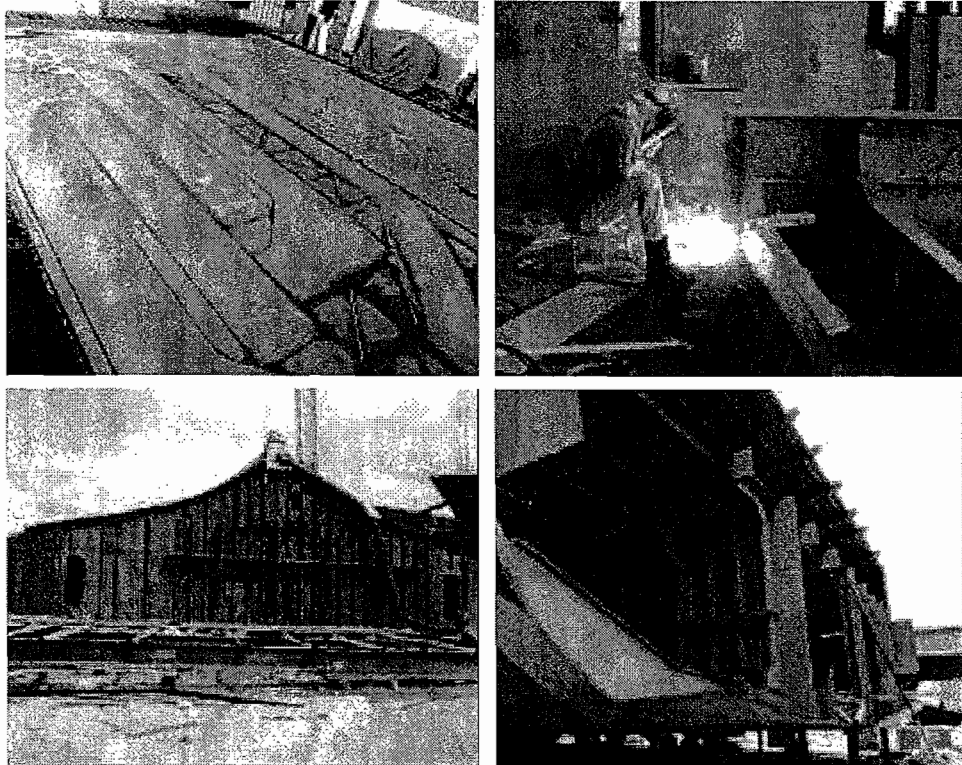
##### Testing and Commissioning

We perform testing and commissioning works for all the vessels that we construct prior to final handover to customers. We have to ensure that the vessel conforms to the designed specifications and requirements, and also the requirements of the relevant classification societies.

The official trial cruise is also conducted after the launch of vessel in the water where all the surveyors from the relevant classification and customer's representative are present. During the trial, various tests are conducted including tests on speed, engine performance, and operation of all equipment and instruments.

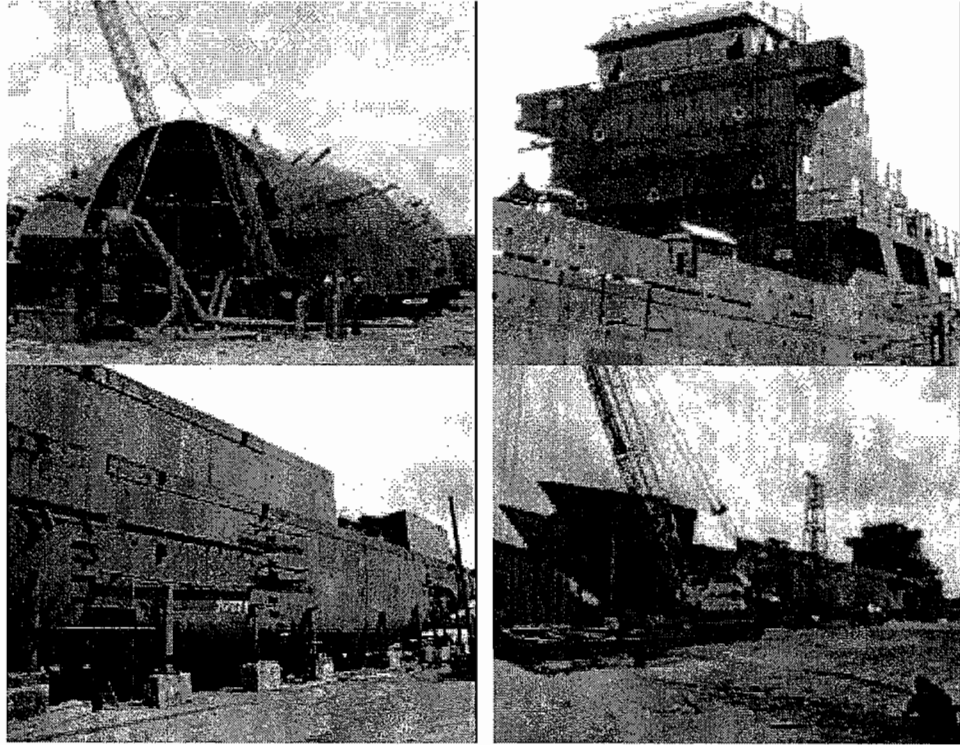
The relevant classification societies will issue the class certificate and statutory certificates for the vessel upon the successful completion of the official trial. The Marine Department of Malaysia will also issue certificate of Malaysia Registry, if the vessel built is registered in Malaysia.

Some of our shipbuilding activities are depicted below:-

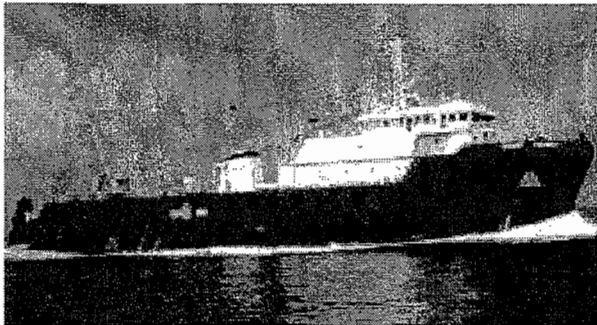


[THE REST OF THIS PAGE HAS BEEN INTENTIONALLY LEFT BLANK]

4. INFORMATION ON OUR GROUP (Cont'd)



Some of the vessels that we constructed for our customers are as follows:-



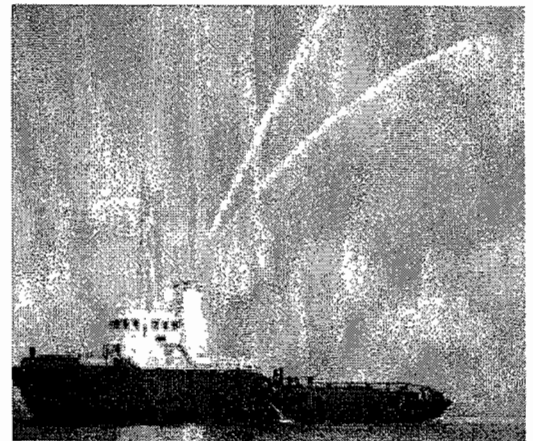
*Maintenance Work Boat*



*Landing Craft*



*Landing Craft*



*AHT*

#### 4. INFORMATION ON OUR GROUP (Cont'd)

##### (C) SHIP REPAIRING AND MAINTENANCE SERVICES

Provision of ship repairing and maintenance services is undertaken by our subsidiaries Shin Yang Shipyard and Piasau Slipways. With our in-house shipbuilding expertise and capabilities, we are able to undertake a range of repairing and maintenance activities at the shipyard facilities or at other locations.

Some of the repair works we undertake comprise the following:-

- inspection of wiring and piping systems;
- inspection and maintenance of machinery and equipment;
- replacement of corroded or faulty structures and parts, as well as piping systems;
- altering and modifying parts, structures and fittings;
- removal and installation of parts and equipment;
- cleaning;
- sand blasting;
- painting and coating.

Major repair and maintenance works such as replacement of propeller and repainting underwater portion of the hull are carried out in dry dock at our shipyard.

For the FYE 30 June 2009, our revenue derived from ship repair and maintenance services was RM80.4 million, accounting 11.9% of our total revenue. For the 5-month FPE 30 November 2009, revenue derived from our ship repair and maintenance services was RM5.7 million or 2.1% of our total revenue.

##### (D) FABRICATION OF METAL STRUCTURES

We have in-house capabilities to undertake minor fabrication of metal structures for oil and gas, and industrial applications. Our fabrication is also used to support our shipbuilding and ship repairs services.

The fabrication activity is undertaken by our subsidiaries Shin Yang Shipyard and Piasau Slipways.

Some of the minor fabrication undertaken by us includes the following:-

- steel structures for parts of metal bridges;
- steel structures and frame for factories and warehouses;
- steel structures and parts for jetties;
- metal buoy for offshore oil and gas industry;
- helideck built on top of vessels.

In our fabrication of metal structures, we undertake the following activities:-

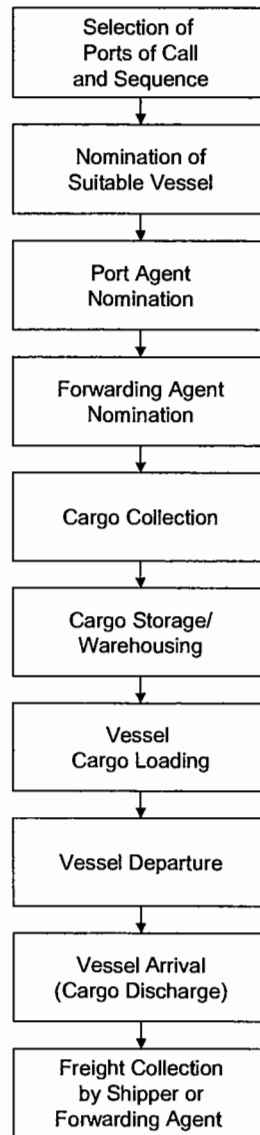
- Procurement of raw materials, consumables, parts and components;
- Fabrication including cutting, rolling, bending and welding of metal products;
- Sub-assembly of fabricated parts and components for piping, structural beams and steel plates, and other support structures;
- Transportation and delivery;
- Installation and commissioning of systems.

For the FYE 30 June 2009, fabrication of metal structures accounted for 0.7% of our total revenue, amounting to RM4.6 million. For the 5-month FPE 30 November 2009, fabrication of metal structures accounted for RM5.5 million or 2.0% of our total revenue.



**4. INFORMATION ON OUR GROUP (Cont'd)****4.2.3 Process Flow****(a) Process Flow for Shipping Activities**

The process flow for shipping activities is depicted in the diagram below:-



The process flow for shipping goods or containers and other shipping activities begins with the selection of ports of call and the sequence of ports where the vessel will arrive at. The suitable vessel is selected or nominated according to the type of goods to be shipped as well as to where the goods are to be shipped.

A port agent is also selected at this stage. Its responsibilities include clearing ships or vessels in and out of ports. Other services provided by port agents include communicating with customs, immigration and other authorities as well as providing bunker, water, waste, repairs, crew changes, provisions and medical services on vessels. A forwarding agent or shipping agent is sometimes selected to be responsible for the transfer of goods and cargo to local and international destinations. Forwarding agents provides quotes and advice on insurance costs, special documentation fees and review of the necessary documents prior to transport and delivery as well as preparing of the bill of lading and coordinating with customs brokers to make sure that all regulations are met.

#### 4. INFORMATION ON OUR GROUP (Cont'd)

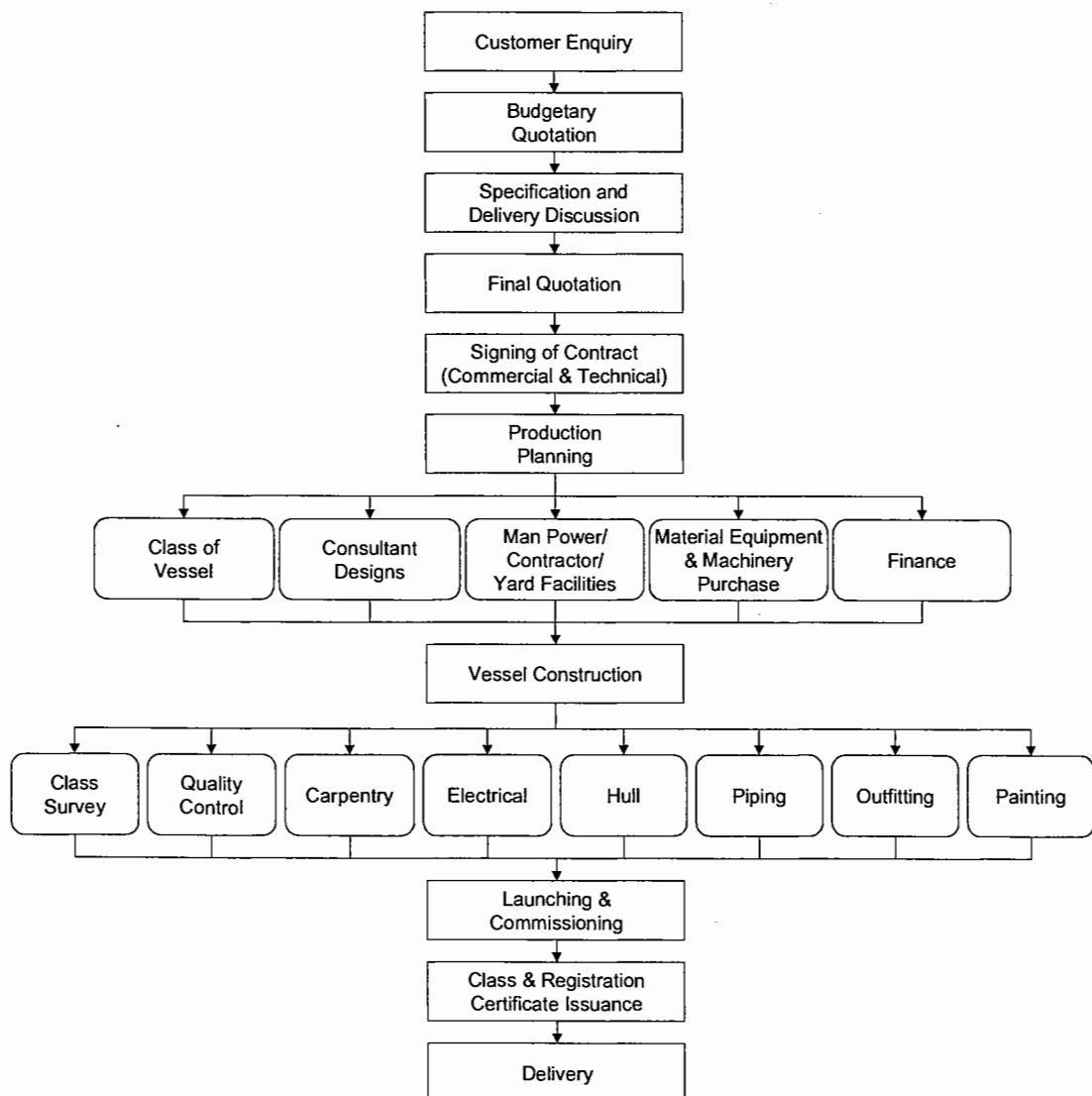
Goods and cargo that are to be shipped are collected by haulage and trucking companies from the shipper or forwarding agent and delivered for packing and loading into containers in the port warehouse or container yard. The goods are stored until ready for loading onto the vessel.

When the vessel with inbound cargo arrives at its port of call, some of its cargo is unloaded or discharged before the customer's cargo or goods are then loaded into the vessel. Upon completion of the loading of cargo or goods onto the vessel, the vessel departs and sets sail to its next designated destination or port of call.

Its arrival at the next port of call, the cargo is unloaded and is collected by the designated shipping or forwarding agent for delivery.

##### (b) Process Flow for Ship Building

The process flow for ship building is depicted in the diagram below:-



Upon receiving enquiries from the customer, the production team will hold meetings to ascertain their requirements. Based on the required specifications a design is proposed to get an overall picture of the vessel and subsequently a budgetary quotation is offered to the customer.

**4. INFORMATION ON OUR GROUP (Cont'd)**

When the quotation is accepted, detailed discussions on vessel specifications, pricing and delivery are taken place before a final quotation is issued to the customer.

Contracts in terms of final pricing and technical specifications are signed before production planning for the construction of the vessel begins. The production team oversees the project planning and preparation functions and coordinates with external naval architects and other related contractors and consultants.

The designs are submitted to the relevant classification societies for approvals according to the vessel's class or category.

Designs and drawings of the vessels in accordance with the agreed dimensional and design specifications including equipment, parts and materials to be fitted in the ship are laid out.

Upon approval of the designs by the classification societies the commencement of project planning and other preparation work can begin. A vessel construction schedule, which provides a timetable for each stage of the vessel construction process, is developed.

The procurement and purchasing division receives the construction schedule, as well as the list of machinery, equipment, parts and materials required. The division also makes the necessary financial arrangements for its purchases if required.

The commencement of constructing and building the vessel begins with the fabrication and assembly of parts from raw materials. Vessel construction include:-

- Class surveys are carried out by Marine Surveyors to ensure compliance with various standards or specifications;
- Quality control procedures are undertaken throughout the construction process of the vessel;
- Wood related furnishings, fixtures and panels as well as cabins requiring carpentry work are installed at this stage;
- Steel panels are assembled into larger block structures, and are then welded together to form the hull of the vessel;
- Once the hull of the vessel is formed, machinery and equipment, electrical and piping systems are installed;
- Ancillary equipment such as communications, navigational and surveillance systems, and air conditioning equipment are subsequently outfitted;
- Painting of the hull and all other metal surfaces with multi-coated marine paints after surface preparation such as sand blasting is a continuous process during vessel construction.

Various tests on the vessel's hull are carried out to assess its structural integrity. These tests include X-ray welding inspections, ultrasonic testing and air pressure and hydrostatic tests. Defects are immediately rectified and retested again.

At this stage, the vessel is ready for launching into the water using steel launching pipe and beams. After its inaugural launching, the vessel is berthed for final alignment of the propeller shafts to the main engines and related gearboxes.

#### 4. INFORMATION ON OUR GROUP (Cont'd)

Various systems on the vessel are then commissioned and tested. A dock trial is carried out to ensure that the vessel conforms to the customer's design specifications and requirements, as well as the requirements of the relevant classifications and approvals.

An official sea trial is carried out in the presence of the customer's representatives and surveyors from the relevant classification societies. The purpose of the official trial is undertaken to ascertain the seaworthiness and proper function of the vessel, ensuring specifications and requirements are met, testing of all machinery and equipment functions and to ensure that the vessel fully conforms to all of the requirements of the relevant classifications.

A class certificate and registration certificate for the vessel are issued upon successful completion of the official trials. These documents certify that the vessel conforms to the specifications, standards and requirements set out in various international conventions that govern the shipping industry.

The vessel is finally delivered or handed over to the client after the issuance of the relevant certificates.

##### 4.2.4 Technology Used

We utilise shipbuilding technologies and multi-discipline engineering in our shipbuilding operations:-

- Hydrodynamic hull technology;
- Welding technology;
- Mechanical engineering;
- Electrical engineering.

##### (a) Hydrodynamic Hull Technology

A hull of the vessel is regarded as the most important part of the ship, as it provides buoyancy and structural strength. In addition, the design of the hull is also crucial in providing stability and determining the propulsion efficiency of the vessel.

Various types of hull can be used depending on the required performance of the vessel in the water. The three basic hull types are as follows:-

- Displacement hull;
- Planing hull;
- Semi-displacement or semi-planing hull.

**[THE REST OF THIS PAGE HAS BEEN INTENTIONALLY LEFT BLANK]**

---

**4. INFORMATION ON OUR GROUP (Cont'd)**

---

**Displacement Hull**

A displacement hull is a hull whereby the displacement weight of water is equivalent to the submerged volume of the hull, regardless of whether or not the vessel is moving. The hull is supported exclusively or predominantly by the pressure of water displaced by the hull. The hull of the vessel is not lifted out of the water when the vessel is in motion.

In general, the advantages of a vessel with displacement hull compared to ships with other hull types include:-

- Vessel can be propelled with a relatively small engine;
- Propulsion is more fuel efficient;
- Vessel has a smooth, seaworthy ride as the vessel is travelling through water, not above it;
- Vessel is more stable.

However, the theoretical maximum speed of a vessel with a displacement hull is largely determined by the length of the vessel's waterline. Applying additional power at this point has little or no effect in increasing the speed of the vessel. Within the shipping industry, most large vessels such as oil tankers, passenger ships, container ships and other cargo ships utilise the displacement hull type.

We commonly construct tugboats, AHTs, utility/support vessels and other vessels utilise the displacement hull type.

**Planing Hull**

A planing hull is a hull that is configured to develop positive dynamic pressure so that its draft decreases with increasing speed. The hull of the vessel is progressively raised out of the water as speed and power increases. Drag is reduced as the hull is lifted out of the water, allowing faster speeds to be achieved.

In general, the primary advantages of a vessel with planing hull compared to other types of hull, is that the vessel can achieve higher speeds.

The main disadvantage of a vessel with a planing hull is that the motion of the vessel is less smooth, as the vessel is moving along the surface of the water. The vessel can experience severe pounding in rough seas, which can lead to crew discomfort and damage to the hull and equipment. The planing hull is most commonly used in vessels where high speeds are desired, such as in speedboats, some types of passenger ferries, and naval patrol vessels.

**Semi-displacement or Semi-planing hull**

A semi-displacement or semi-planing hull is capable of generating a moderate amount of dynamic lift as the vessel moves forward, although most of the weight is supported through displacement.

A vessel with a semi-displacement or semi-planing hull has a higher theoretical maximum speed compared to a vessel with a displacement hull. The ship, however will require more powerful engines, and consume more fuel. Semi-displacement or semi-planing hulls are commonly used in large naval vessels and large passenger ferries.

---

**4. INFORMATION ON OUR GROUP (Cont'd)**

---

**(b) Welding Technology**

We applied welding technology in the construction and building of vessels. Welding is used to join steel plates, steel bars and other materials to construct the hull and superstructure.

Welding is a fabrication process that joins materials, usually metals or thermoplastics, by causing coalescence. Welding is often done by melting the work pieces and adding a filler material to form a pool of molten material that cools to become a strong joint. Sometimes pressure is also used in conjunction with heat, or by itself, to produce the weld.

The welding techniques that are currently commonly used include:-

- Gas welding;
- Arc welding;
- Resistance welding;
- Energy beam welding;
- Ultrasonic welding.

We commonly utilise arc welding technique during the building and construction processes.

**Arc Welding**

In arc welding, an electric arc is created between an electrode and the base material to melt metal at the welding point. The welding region is sometimes protected by an inert or semi-inert gas. Filler materials are sometimes used.

**(c) Mechanical Engineering**

We currently also applied mechanical engineering principles, and makes use specialised shipbuilding software in our shipbuilding activities.

In general, mechanical engineering is the engineering discipline that involves the application of the principles of physics for the analysis, design, manufacturing and maintenance of mechanical systems.

Mechanical engineers apply principles such as heat, force, and the conservation of mass and energy to analyse static and dynamic physical systems, in contributing to the design of things such as structures, vessels, other vehicles, industrial equipment and machinery, and other objects.

The use of computers and specialised engineering software are now common in mechanical engineering. The following types of computer programs are currently commonly used in mechanical engineering:-

- Computer Aided Design (CAD);
- Computer Aided Manufacturing (CAM);
- Finite Element Analysis (FEA);
- Computational Fluid Dynamics (CFD);
- Plant Design and Management System (PDMS).

**[THE REST OF THIS PAGE HAS BEEN INTENTIONALLY LEFT BLANK]**

---

#### 4. INFORMATION ON OUR GROUP (Cont'd)

---

We commonly applied the following mechanical engineering technologies for our shipbuilding:-

- Vessel design for all moving and stationery parts, among many others, include ship hull, engines, power transmission systems and gear boxes, propulsion systems, hydraulic systems, heating, ventilation and air conditioning systems, piping systems, pumps, installation of instruments, machinery and equipment, and other metal and non-metal parts and modules;
- Testing and analysis of machines, components and materials to determine their performance, strength, response to stress and other characteristics;
- Integration and commissioning of all parts, machinery and equipment to ensure optimum performance.

#### (d) Electrical Engineering

We apply the principles of electrical engineering to practical purposes such as the design of various electrical systems for the construction of vessels.

In general, electrical engineering is the engineering discipline that deals with the study and application of electricity and electromagnetism. Like mechanical engineering, electrical engineering is characterised by the application of knowledge to the creation of useful devices, objects and machines.

We currently utilise some of the electrical engineering techniques for our shipbuilding as follows:-

- Control systems;
- Communication and navigation system;
- Cables and wiring;
- Electric generator sets;
- Instruments, machinery and equipment that is powered by electricity;
- Lighting systems.

The knowledge of electrical engineering, expertise and skill are required for the installation, integration and commissioning of those systems and equipments.

**[THE REST OF THIS PAGE HAS BEEN INTENTIONALLY LEFT BLANK]**

#### 4. INFORMATION ON OUR GROUP (Cont'd)

##### 4.2.5 Types, Sources and Availability of Raw Materials/Input

The followings are the major types of materials and services purchased for our business operations for the FYE 30 June 2009:-

	VALUE OF PURCHASES	% OF TOTAL GROUP PURCHASES	SOURCES OF SUPPLY	
	(RM'000)	(%)	Local (%)	Import* (%)
<b>Raw Materials, consumables and services</b>	<b>497,431</b>	<b>92.3</b>	<b>56.4</b>	<b>43.6</b>
Diesel and fuel	123,823	23.0	86.0	14.0
Mild steel plates	95,776	17.8	-	100.0
Other parts and components, and consumable materials for shipbuilding <sup>(1)</sup>	63,605	11.8	70.0	30.0
Port charges and other consumables <sup>(2)</sup>	62,785	11.7	88.0	12.0
Materials and hardware for ship repairing <sup>(3)</sup>	52,926	9.8	74.5	25.5
Marine engines and equipment	46,613	8.6	-	100.0*
Flat bars, angle bars and pipes	19,384	3.6	12.6	87.4
Auxiliary services and fees <sup>(4)</sup>	14,545	2.7	100.0	-
Others <sup>(5)</sup>	17,974	3.3	100.0	-
<b>Sub-contracted Services</b>	<b>41,678</b>	<b>7.7</b>	<b>100.0</b>	<b>-</b>
Fabrication of steel structures	17,280	3.2	100.0	-
Blasting and painting works	16,599	3.1	100.0	-
Manpower supply	2,230	0.4	100.0	-
Others <sup>(6)</sup>	5,569	1.0	100.0	-
<b>TOTAL</b>	<b>^539,110</b>	<b>100.0</b>	<b>59.8</b>	<b>40.2</b>

The purchases of raw materials for the FYE 30 June 2009 amounted to approximately RM539.1 million. The above purchases exclude electricity and other utilities.

- Notes:-**
- \* Include imports via local stockists
  - ^ Total does not add-up due to rounding
  - (1) Include oxygen and acetylene gas, welding materials, electrical equipment and parts, interior fittings and fixtures, generators, painting materials and galvanised materials
  - (2) Include port clearing charges, freight agent fees, insurance premium, food and beverage for crew
  - (3) Include replacement parts for vessels such as marine propellers, shafts, and deck equipments, docking and survey materials, and hardware such as ropes, hooks and shackles
  - (4) Include sling and stevedoring fees, lighterage and towing services, and equipment hiring services
  - (5) Include telecommunications charges, licence fees, printing and others
  - (6) Include fabrication of piping and outfitting works

For the FYE 30 June 2009, purchases of raw materials and consumables for our business operations amounted to 92.3% or RM497.4 million of our total purchases of materials and services.



**4. INFORMATION ON OUR GROUP (Cont'd)**

We also utilised external sub-contracted workers to perform fabrication of steel structures, blasting and painting works, supply of manpower as well as fabrication of piping and outfitting works. For the FYE 30 June 2009, sub-contracted fees accounted for 7.7% of our total purchases of materials and services.

For the FYE 30 June 2009, local sources of materials and services accounted for 59.8% of our total purchases of materials and services. For the FYE 30 June 2009, 40.2% of our purchases were sourced from overseas suppliers or imports via local stockists.

Purchases of diesel and fuel are the major parts of consumables used by all our vessels for shipping operations. For the FYE 30 June 2009, purchases of diesel and fuel accounted for 23.0% of our total purchases of materials and services. For the FYE 30 June 2009, we sourced 86.0% of our diesel and fuel from local suppliers, and the remainder 14.0% was sourced from overseas suppliers.

Mild steel plates are major raw materials used for the construction of vessels, which accounted for 17.8% of our total purchases of materials and services for the FYE 30 June 2009. We sourced all of our mild steel plates from overseas suppliers.

For the FYE 30 June 2009, purchases of other parts, components and consumable materials for shipbuilding operations accounted for 11.8% of our total purchases of materials and services. We sourced 70.0% of our other parts, components and consumable materials for shipbuilding operations from local suppliers for the FYE 30 June 2009. The remainder 30% were sourced from overseas suppliers and imports via local stockists.

Port charges and other consumables accounted for 11.7% of our total purchases of materials and services for the FYE 30 June 2009. Port charges and other consumables comprised mainly port clearance charges, agent fees, insurance, and food and beverages for crew.

For the FYE 30 June 2009, purchases of materials and hardware for ship repairing accounted for 9.8% of our total purchases of materials and services for the FYE 30 June 2009. For the FYE 30 June 2009, 74.5% of our purchases of replacement materials and hardware for ship repairing were sourced from local suppliers, whilst the remainder 25.5% were sourced from overseas suppliers and imports via local stockists.

Marine engines are used for the shipbuilding operations, which accounted for 8.6% of our total purchases of materials and services for the FYE 30 June 2009. All our marine engines were imported via local stockists.

For the FYE 30 June 2009, purchases of flat bars, angle bars and pipes accounted for 3.6% of our total purchases of materials and services for the FYE 30 June 2009. For the FYE 30 June 2009, we sourced 12.6% of our flat bars, angle bars and pipes from local suppliers, and the bulk of 87.4% were sourced from overseas suppliers and imports via local stockists.

Other services purchased include sling and stevedoring fees, lighterage and towing services, and equipment hiring services, telecommunications charges, licence fees, printing and others, which accounted for 6.0% of our total purchases of materials and services for the FYE 30 June 2009. All of these services were sourced from local suppliers.

With the respect to the purchase of sub-contracted services, fabrication of steel structures services, blasting and painting works, manpower supply and others accounted 7.7% of our total purchases of materials and services for the FYE 30 June 2009. All of these services were sourced from local suppliers.

To-date, we have not experienced any shortages of raw materials, consumables and services that disrupted our business operations.

**4. INFORMATION ON OUR GROUP (Cont'd)****5-month FPE 30 November 2009**

The followings are the major types of materials and services purchased for our business operations for the 5-month FPE 30 November 2009:-

	VALUE OF PURCHASES	% OF TOTAL GROUP PURCHASES	SOURCES OF SUPPLY	
	(RM'000)	(%)	Local (%)	Import* (%)
<b>Raw Materials, consumables and services</b>	<b>117,875</b>	<b>92.3</b>	<b>66.7</b>	<b>33.3</b>
Diesel and fuel	40,083	31.4	72.4	27.6
Marine engines and equipment	16,091	12.6	52.4	47.6
Port charges and other consumables <sup>(1)</sup>	13,479	10.5	88.1	11.9
Materials and hardware for ship repairing <sup>(2)</sup>	12,601	9.9	71.6	28.4
Auxiliary services and fees <sup>(3)</sup>	11,553	9.0	74.4	25.6
Other parts and components, and consumable materials for shipbuilding <sup>(4)</sup>	10,442	8.2	56.4	43.6
Flat bars, angle bars and pipes	4,369	3.4	24.5	75.5
Mild steel plates	2,541	2.0	6.5	93.5
Others <sup>(5)</sup>	6,716	5.3	68.0	32.0
<b>Sub-contracted Services</b>	<b>9,891</b>	<b>7.7</b>	<b>100.0</b>	<b>-</b>
Fabrication of steel structures	4,647	3.6	100.0	-
Blasting and painting works	3,344	2.6	100.0	-
Piping works	1,174	0.9	100.0	-
Others <sup>(6)</sup>	726	0.6	100.0	-
<b>TOTAL</b>	<b>127,766</b>	<b>100.0</b>	<b>69.3</b>	<b>30.7</b>

The purchases of raw materials for the 5-month FPE 30 November 2009 amounted to approximately RM127.8 million. The above purchases exclude electricity and other utilities.

**Notes:-**

- \* Include imports via local stockists
- (1) Include port clearing charges, freight agent fees, insurance premium, food and beverage for crew
  - (2) Include replacement parts for vessels such as marine propellers, shafts, and deck equipments, docking and survey materials, and hardware such as ropes, hooks and shackles
  - (3) Include sling and stevedoring fees, lighterage and towing services, and equipment hiring services
  - (4) Include oxygen and acetylene gas, welding materials, electrical equipment and parts, interior fittings and fixtures, generators, painting materials and galvanised materials.
  - (5) Include telecommunications charges, licence fees, printing and others.
  - (6) Include manpower supply and outfitting works

For the 5-month FPE 30 November 2009, purchases of raw materials and consumables accounted for 92.3% or RM117.9 million of our total purchases of materials and services, whilst subcontracted services accounted for 7.7% of our total purchases.

**4. INFORMATION ON OUR GROUP (Cont'd)**

For the 5-month FPE 30 November 2009, local sources of materials and services accounted for 69.3% of our total purchases of materials and services. The remainder of 30.7% were sourced from overseas suppliers or imports via local stockists.

Purchases of diesel and fuel are the major parts of consumables used by all our vessels for shipping operations. For the 5-month FPE 30 November 2009, purchases of diesel and fuel accounted for 31.4% of our total purchases of materials and services. For the 5-month FPE 30 November 2009, we sourced 72.4% of our diesel and fuel from local suppliers, and the remainder 27.6% was sourced from overseas suppliers.

Marine engines and other equipments were used for the shipbuilding operations, which accounted for 12.6% of our total purchases of materials and services for the 5-month FPE 30 November 2009. We sourced 52.4% of our marine engine and equipment from local suppliers, and the remainder 47.6% was sourced from overseas suppliers and imported via local stockists.

Port charges and other consumables accounted for 10.5% of our total purchases of materials and services for the 5-month FPE 30 November 2009. Port charges and other consumables comprised mainly port clearance charges, agent fees, insurance, and food and beverages for crews.

For the 5-month FPE 30 November 2009, purchases of materials and hardware for ship repairing accounted for 9.9% of our total purchases of materials and services for the 5-month FPE 30 November 2009. For the 5-month FPE 30 November 2009, 71.6% of our purchases of replacement materials and hardware for ship repairing were sourced from local suppliers, whilst the remainder 28.4% were sourced from overseas suppliers and imports via local stockists.

For the 5-month FPE 30 November 2009, purchases of other parts, components and consumable materials for shipbuilding operations accounted for 8.2% of our total purchases of materials and services. We sourced 56.4% of our other parts, components and consumable materials for shipbuilding operations from local suppliers for the 5-month FPE 30 November 2009. The remainder 43.6% were sourced from overseas suppliers and imports via local stockists.

For the 5-month FPE 30 November 2009, purchases of flat bars, angle bars and pipes accounted for 3.4% of our total purchases of materials and services for the 5-month FPE 30 November 2009. For the 5-month FPE 30 November 2009, we sourced 24.5% of our flat bars, angle bars and pipes from local suppliers, and the bulk of 75.5% were sourced from overseas suppliers and imports via local stockists.

Mild steel plates are major raw materials used for the construction of vessels, which accounted for 2.0% of our total purchases of materials and services for the 5-month FPE 30 November 2009. We sourced 93.5% of our mild steel plates from overseas suppliers and 6.5% from local suppliers.

Services purchased include sling and stevedoring fees, lighterage and towing services, and equipment hiring services, telecommunications charges, licence fees, printing and others, which accounted for 14.3% of our total purchases of materials and services for the 5-month FPE 30 November 2009.

With respect to the purchase of sub-contracted services, fabrication of steel structures services, blasting and painting works, manpower supply and others accounted 7.7% of our total purchases of materials and services for the 5-month FPE 30 November 2009. All of these services were sourced from local suppliers.

Company No. 666062-A

4. INFORMATION ON OUR GROUP (Cont'd)

4.2.6 Approvals, Major Licences and Permits Obtained

As at LPD, we have obtained the following approvals, major licences and permits for the operations of our business as follows:-

Company	Description of approval / licence / permit	Licence / Reference No.	Date of issuance or commencement / expiry	Authority	Major Conditions Imposed	Status of compliance
Piasau Slipways	Manufacturing Licence for construction of tugboats, barges, landing craft and cargo ship at Kuala Baram Industrial Estate, Miri, Sarawak	A. 009611	14.11.1994 / No expiry date	MITI	At least 30% shareholding must be held by Bumiputera investors. Approval of MITI must be obtained for the sale of the Shares in the company	To comply within one (1) year from date of MITI's approval on 11 May 2010 ↓
Piasau Slipways	Approval for manufacturing licence for shipbuilding and shiprepairing at Lot 1098, Block 37, Kemena Land District, 97000 Bintulu, Sarawak	110/35110/36225/0000 01ACI	19.04.2010 / No expiry date	MITI	-	Not applicable
Piasau Slipways	Import Duty Exemption permit as a bonafide ship and boat builder and repairer which is entitled to import duty and sales tax exemption	(8.20)116/5/1-5065(21)	24.07.2001 / No expiry date	Ministry of Finance, Malaysia	-	Not applicable
Shin Yang Shipyard	Manufacturing licence for shipbuilding, ship repairing and metal fabrication at Lot 263, Block 1, Kuala Baram Land District, Miri, Sarawak	A. 016885	15.10.2008 / No expiry date	MITI	To inform MITI for any sale of shares in Shin Yang Shipyard	Complied
Shin Yang Shipyard	Manufacturing licence for shipbuilding, ship repairing and metal fabrication at Lot 2125, Asean Bridge, Kuala Baram Land District, Miri, Sarawak*	A. 016886	15.10.2008 / No expiry date	MITI	To inform MITI for any sale of shares in Shin Yang Shipyard	Complied
Shin Yang Shipyard	Import Duty Exemption permit as a bonafide ship and boat builder and repairer which is entitled to import duty and sales tax exemption	(8.20)116/5/1-16061(4)	23.05.2002 / No expiry date	Ministry of Finance, Malaysia	-	Not applicable

Note:-

\* Lot 2125, Asean Bridge, Kuala Baram Land District, Miri, Sarawak was part of a larger piece of land that has been partly substituted by Lot 70, Kuala Baram Land District

Company No. 666062-A

4. INFORMATION ON OUR GROUP (Cont'd)

Company / Vessel	Description of approval / licence / permit	Licence / Reference No.	Date of issuance or commencement / expiry	Authority	Major Conditions Imposed	Status of compliance
Shin Yang Shipping / Danum 69	Certificate of Malaysian Registry	330749	21.11.2007	Registrar of Malaysian Ships	Nil	Not applicable
	Ship Sanitation Control Exemption Certificate	189461	19.09.2009	Government of Malaysia	(1)	Complied
	International Load Line Exemption Certificate	354/2007	10.10.2007	Bureau Veritas	(2)	Complied
	Cargo Safety Equipment	KLP0/DWO/20091229215223	30.12.2009 - 29.05.2010 (Scheduled for survey for renewal of licence)	Bureau Veritas	Nil	Not applicable
	International Tonnage Certificate	SITLO/150T/2007	06.11.2007	Bureau Veritas	Nil	Not applicable
	International Load Line Certificate	SGPO/JEC/20080619141709	19.06.2008 - 07.01.2013	Bureau Veritas	(3)	Complied
	Cargo Ship Safety Radio Certificate	KLP0/DWO/20091229215101	30.12.2009 - 29.05.2010 (Scheduled for survey for renewal of licence)	Bureau Veritas	Nil	Not applicable
	International Oil Pollution Prevention Certificate	SGPO/JEC/20080619141815	19.06.2008 - 07.01.2013	Bureau Veritas	(4)	Complied
	Sewage Pollution Prevention	SGPO/JEC/20080909152120	09.09.2008 - 07.01.2013	Bureau Veritas	Nil	Not applicable
	Anti - Fouling	SGPO/JEC/20080909152329	09.09.2008	Bureau Veritas	Nil	Not applicable
	Safe Manning	SMD 486/2007	08.09.2008 - 11.12.2012	Government of Malaysia	Nil	Not applicable
	Ship Station Licence (Apparatus Assignment)	01437708-000SU/32007	13.12.2007 - 12.12.2012	Malaysian Communications and Multimedia Commission	Nil	Not applicable
	International Air Pollution Prevention Certificate	SGPO/JEC/2008072170403	02.07.2008 - 07.01.2013	Bureau Veritas	(5)	Complied
	International Ship Security Certificate	KLP0/NDM/200807093925PM	09.07.2008 - 28.06.2013	Bureau Veritas	(6)	Complied
Certificate of Classification	SGPO/JEC/20080619141655	19.06.2008 - 07.01.2013	Bureau Veritas	(7)	Complied	

## 4. INFORMATION ON OUR GROUP (Cont'd)

Company / Vessel	Description of approval / licence / permit	Licence / Reference No.	Date of issuance or commencement / expiry	Authority	Major Conditions Imposed	Status of compliance
Shin Yang Shipping / Danum 69 (Cont'd)	Domestic Shipping Licence	DSL 3597/2009	07.12.2009 - 06.12.2010	Domestic Shipping Licensing Board	Nil	Not applicable
	Safety Management Certificate	SGP0/SUL/200807093649PM	09.07.2008 - 28.06.2013	Bureau Veritas	(8)	Complied
	Safety Construction Certificate	SGPO/JEC/20080619141714	19.06.2008 - 07.01.2013	Bureau Veritas	(10)	Complied
Shin Yang Shipping / Danum 68	Certificate of Malaysian Registry	330748	15.08.2007	Registrar of Malaysian Ships	Nil	Not applicable
	Ship Sanitation Control Exemption Certificate	189373	12.08.2009	Government of Malaysia	(1)	Complied
	International Load Line Exemption Certificate	325/2007	17/09/2007	Government of Malaysia	(2)	Complied
	Cargo Safety Equipment	SGP0/CLU/20090909165618	09.09.2009 - 05.09.2011	Bureau Veritas	Nil	Not applicable
	International Tonnage Certificate	SITLO/098T/2007	09.07.2007	Bureau Veritas	Nil	Not applicable
	International Load Line Certificate	SGPO/JEC/20080619133909	19.06.2008 - 14.09.2012	Bureau Veritas	(3)	Complied
	Cargo Ship Safety Radio Certificate	SGP0/CLU/20090909172046	09.09.2009 - 05.09.2010	Bureau Veritas	Nil	Not applicable
	Domestic shipping licence	DSL 2608/2009	04.09.2009 - 03.09.2010	Domestic Shipping Licensing Board	Nil	Not applicable
	International Oil Pollution Prevention Certificate	SGPO/JEC/20080619134011	19.06.2008 - 14.09.2012	Bureau Veritas	(4)	Complied
	Sewage Pollution Prevention	SGP0/JEC/20080619134049	19.06.2008 - 14.09.2012	Bureau Veritas	Nil	Not applicable
	Anti - Fouling	KLP0/DWO/20070915192656	15.09.2007	Bureau Veritas	Nil	Not applicable
	Safe Manning	SMD 346/2007	14.09.2007 - 29.08.2012	Government of Malaysia	Nil	Not applicable
	Ship Station Licence (Apparatus Assignment)	01430190-000SU/32007	27.08.2007 - 26.08.2012	Malaysian Communications and Multimedia Commission	Nil	Not applicable
International Air Pollution Prevention Certificate	SGPO/JEC/20080619134248	19.06.2008 - 14.09.2012	Bureau Veritas	(5)	Complied	
International Ship Security Certificate (ISS)	KLP0/NDM/200803182528 PM	18.03.2008 - 14.03.2013	Bureau Veritas	(6)	Complied	

Company No. 666062-A

4. INFORMATION ON OUR GROUP (Cont'd)

Company / Vessel	Description of approval / licence / permit	Licence / Reference No.	Date of issuance or commencement / expiry	Authority	Major Conditions Imposed	Status of compliance
Shin Yang Shipping / Danum 68 (Cont'd)	Certificate of Classification	SGPO/JEC/20080619133859	19.06.2008 - 14.09.2012	Bureau Veritas	(7)	Complied
	Safety Management Certificate	SGP0/SUL/200803170323PM	17.03.2008 - 14.03.2013	Bureau Veritas	(8)	Complied
	Safety Construction Certificate	SGP0/JEC/20080619133918	19.06.2008 - 14.09.2012	Bureau Veritas	(10)	Complied
Shin Yang Shipping / Danum 9	Certificate of Malaysian Registry	329589	27.10.2004	Registrar of Malaysian Ships	Nil	Not applicable
	Ship Sanitation Control Exemption Certificate	189522	16.10.2009	Government of Malaysia	(1)	Complied
	International Load Line Exemption Certificate	427/2004	05.11.2004	Government of Malaysia	(2)	Complied
	Cargo Safety Equipment	SGPO/KEL/200812032216 PM	03.12.2008 - 05.11.2010	Bureau Veritas	Nil	Not applicable
	International Tonnage Certificate	SITLO/071T/2004	27.09.2004	Bureau Veritas	Nil	Not applicable
	International Load Line Certificate	SGP0/CLU/201005062617	06.05.2010 - 25.11.2014	Bureau Veritas	(3)	Complied
	Cargo Ship Safety Radio Certificate	SGP0/CLU/201005060514	06.05.2010 - 23.11.2010	Bureau Veritas	Nil	Not applicable
	International Oil Pollution Prevention Certificate	SGP0/CLU/201005060649	06.05.2010 - 25.11.2014	Bureau Veritas	(4)	Complied
	International Air Pollution Prevention Certificate	SGP0/CLU/201005063437	06.05.2010 - 25.11.2014	Bureau Veritas	(5)	Complied
	Anti - Fouling	KLP0/BSB/20091124131630	24.11.2009	Bureau Veritas	Nil	Not applicable
Safe Manning	SMD 43/2005	07.01.2010 - 05.01.2015	Government of Malaysia	Nil	Not applicable	
Ship Station Licence (Apparatus Assignment)	01389961-000SU/32005	05.10.2005 - 03.11.2010	Malaysian Communications and Multimedia Commission	Nil	Not applicable	
International Ship Security Certificate (ISS)	KLP0/NDE/200603094223PM	09.03.2006 - 16.02.2011	Bureau Veritas	(6)	Complied	
Certificate of Classification	SGP0/CLU/201005062457	06.05.2010 - 25.11.2014	Bureau Veritas	(7)	Complied	
Safety Management Certificate	SGPO/SKM/20060217120023	18.09.2005 - 17.09.2010	Bureau Veritas	(8)	Complied	
Safety Construction Certificate	SGP0/CLU/2010050062853	06.05.2010 - 25.11.2014	Bureau Veritas	(10)	Complied	

Company No. 666062-A

4. INFORMATION ON OUR GROUP (Cont'd)

Company / Vessel	Description of approval / licence / permit	Licence / Reference No.	Date of issuance or commencement / expiry	Authority	Major Conditions Imposed	Status of compliance
Shin Yang Shipping / Danum 5	Certificate of Malaysian Registry	329556	13.11.2003	Registrar of Malaysian Ships	Nil	Not applicable
	Ship Sanitation Control Exemption Certificate	189523	25.10.2009	Government of Malaysia	(1)	Complied
	International Load Line Exemption Certificate	468/2003	03.02.2005	Bureau Veritas	(2)	Complied
	Cargo Safety Equipment	SGPO/CLU/2009/216160307	16.12.2009 - 09.12.2011	Bureau Veritas	Nil	Not applicable
	International Tonnage Certificate	SITLO/070T/2003-rev.A	15.10.2003	Bureau Veritas	Nil	Not applicable
	International Load Line Certificate	SGPO/KEL/200904224847 PM	22.04.2009 - 07.12.2013	Bureau Veritas	(3)	Complied
	Cargo Ship Safety Radio Certificate	KLP0/CLU/20091216161840	16.12.2009 - 25.11.2010	Bureau Veritas	Nil	Not applicable
	International Oil Pollution Prevention Certificate	SGPO/KEL/200904223618 PM	22.04.2009 - 07.12.2013	Bureau Veritas	(4)	Complied
	Sewage Pollution Prevention	SGPO/KEL/200904225057PM	22.04.2009 - 07.12.2013	Bureau Veritas	(5)	Complied
	International Air Pollution Prevention Certificate	SGPO/KEL/200904223618PM	22.04.2009 - 07.12.2013	Bureau Veritas	(5)	Complied
Anti - Fouling	KLP0/BSB/20081210145307	11.12.2008	Bureau Veritas	Nil	Not applicable	
Safe Manning	SMD 488/2008	02.12.2008 - 24.11.2013	Government of Malaysia	Nil	Not applicable	
Ship Station Licence (Apparatus Assignment)	01371946-000SU/32008	18.11.2008 - 17.11.2013	Malaysian Communications and Multimedia Commission	Nil	Not applicable	
International Ship Security Certificate (ISS)	KLP0/DWO/20090506232315	05.05.2009 - 19.06.2014	Bureau Veritas	(6)	Complied	
Certificate of Classification	SGPO/KEL/200904224743 PM	22.04.2009 - 07.12.2013	Bureau Veritas	(7)	Complied	
Safety Management Certificate	SGPO/SUL/20091007120518	07.10.2009 - 25.09.2014	Bureau Veritas	(8)	Complied	
Safety Construction Certificate	SGPO/KEL/200904225440 PM	22.04.2009 - 07.12.2013	Bureau Veritas	(10)	Complied	



Company No. 666062-A

4. INFORMATION ON OUR GROUP (Cont'd)

Company / Vessel	Description of approval / licence / permit	Licence / Reference No.	Date of issuance or commencement / expiry	Authority	Major Conditions Imposed	Status of compliance
Thaline / Thaline 6	Certificate of Malaysian Registry	329586	05.08.2003	Registrar of Malaysian Ships	Nil	Not applicable
	Cargo Safety Equipment	10QK0268-SEC	25.03.2010 – 24.03.2012	Nippon Kaiji Kyokai	Nil	Not applicable
	International Tonnage Certificate	8HO-0268TM	25.04.2008	Nippon Kaiji Kyokai	Nil	Not applicable
	International Load Line Certificate	09HO5517-LLC	23.07.2009 - 06.07.2014	Nippon Kaiji Kyokai	(3)	Complied
	Cargo Ship Safety Radio Certificate	10QK0199-SRC	11.02.2010 - 10.02.2011	Nippon Kaiji Kyokai	Nil	Not applicable
	International Oil Pollution Prevention Certificate	09HO5517-OPP	23.07.2009 - 06.07.2014	Nippon Kaiji Kyokai	(4)	Complied
	Sewage Pollution Prevention	09HO5517-SPP	23.07.2009 - 06.07.2014	Nippon Kaiji Kyokai	Nil	Not applicable
	Anti - Fouling	09KL0407AFS	26.05.2009	Nippon Kaiji Kyokai	Nil	Not applicable
	Installations registrations	943679	23.07.2009	Nippon Kaiji Kyokai	Nil	Not applicable
	International Air Pollution Prevention Certificate	09HO5517-APP	23.07.2009 - 06.07.2014	Nippon Kaiji Kyokai	(5)	Complied
	International Ship Security Certificate (ISS)	KLP/DWO/20090526123718	26.05.2009 - 04.07.2014	Bureau Veritas	(6)	Complied
	Certificate of Classification	943679	23.07.2009 - 06.07.2014	Nippon Kaiji Kyokai	(7)	Complied
	Safety Management Certificate	8HO-4008SMC	10.12.2008 - 09.11.2013	Nippon Kaiji Kyokai	(8)	Complied
	Safety construction certificate	09HO5517-SCC	23.07.2009 - 06.07.2014	Nippon Kaiji Kyokai	(10)	Complied
	Safety Manning	SMD 108/2008	15.10.2008 - 06.03.2013	Government of Malaysia	Nil	Not applicable
	Ship Sanitation Control Exemption Certificate	189449	14.09.2009	Government of Malaysia	(1)	Complied
	Ship Station Licence	A560682-01364007000su/32008	09.05.2008 - 08.05-2013	Malaysian Communications and Multimedia Commission	Nil	Not applicable

[THE REST OF THIS PAGE HAS BEEN INTENTIONALLY LEFT BLANK]

Company No. 666062-A

4. INFORMATION ON OUR GROUP (Cont'd)

Company / Vessel	Description of approval / licence / permit	Licence / Reference No.	Date of issuance or commencement / expiry	Authority	Major Conditions Imposed	Status of compliance
Thailine / Thailine 9	Certificate of Malaysian Registry	330739	20.06.2006	Registrar of Malaysian Ships	Nil	Not applicable
	Cargo Safety Equipment	09KL0837-SEC	26.11.2009 - 25.11.2011	Nippon Kaiji Kyokai	Nil	Not applicable
	International Tonnage Certificate	8HO-0270TM	25.04.2008	Nippon Kaiji Kyokai	Nil	Not applicable
	International Load Line Certificate	10HO1128-LLC	18.02.2010 - 13.12.2014	Nippon Kaiji Kyokai	(3)	Complied
	Cargo Ship Safety Radio Certificate	09KL0837-SRC	26.11.2009 - 25.11.2010	Nippon Kaiji Kyokai	Nil	Not applicable
	International Oil Pollution Prevention Certificate	10HO1128-OPP	18.02.2010 - 13.12.2014	Nippon Kaiji Kyokai	(4)	Complied
	Sewage Pollution Prevention	10HO1125-SPP	18.02.2010 - 13.12.2014	Nippon Kaiji Kyokai	Nil	Not applicable
	Anti - Fouling	09KL0837AFS	26.11.2009	Nippon Kaiji Kyokai	Nil	Not applicable
	Installations registrations	950324	04.09.2008	Nippon Kaiji Kyokai	Nil	Not applicable
	International Air Pollution Prevention Certificate	10HO1128-APP	18.02.2010 - 13.12.2014	Nippon Kaiji Kyokai	(5)	Complied
	International Ship Security Certificate (ISS)	KLP/DWO/20090403122110	03.04.2009 - 25.08.2011	Bureau Veritas	(6)	Complied
	Certificate of Classification	9100542	18.02.2010 - 13.12.2014	Nippon Kaiji Kyokai	(7)	Complied
	Safety Management Certificate	8HO-3108SMC	18.09.2008 - 20.10.2011	Nippon Kaiji Kyokai	(8)	Complied
	Safety construction certificate	10HO1128-SCC	18.02.2010 - 13.12.2014	Nippon Kaiji Kyokai	(10)	Complied
	Safety Manning	SMD 69/2006	15.10.2008 - 09.04.2011	Government of Malaysia	Nil	Not applicable
	Ship Sanitation Control Exemption Certificate	189391	10.08.2009	Government of Malaysia	(1)	Complied
	Ship Station Licence	A41612901405084-000su/32006	18.04.2006 - 17.04.2011	Malaysian Communications and Multimedia Commission	Nil	Not applicable

[THE REST OF THIS PAGE HAS BEEN INTENTIONALLY LEFT BLANK]

Company No. 666062-A

4. INFORMATION ON OUR GROUP (Cont'd)

Company / Vessel	Description of approval / licence / permit	Licence / Reference No.	Date of issuance or commencement / expiry	Authority	Major Conditions Imposed	Status of compliance
Thailine / Thailine 8	Certificate of Malaysian Registry	329708	29.12.2004	Registrar of Malaysian Ships	Nil	Not applicable
	Cargo Safety Equipment	09KL0487-SEC	25.05.2009 - 20.06.2010	Nippon Kaiji Kyokai	Nil	Not applicable
	International Tonnage Certificate	8HO-0271TM	25.04.2008	Nippon Kaiji Kyokai	Nil	Not applicable
	International Load Line Certificate	08HO5526-LLC	04.09.2008 - 25.08.2013	Nippon Kaiji Kyokai	(3)	Complied
	Cargo Ship Safety Radio Certificate	09KL0487-SRC	25.05.2009 - 24.05.2010 (Scheduled for Survey for renewal of licence)	Nippon Kaiji Kyokai	Nil	Not applicable
	International Oil Pollution Prevention Certificate	08HO5526-OPP	04.09.2008 - 25.08.2013	Nippon Kaiji Kyokai	(4)	Complied
	Sewage Pollution Prevention	08HO5526-SPP	04.09.2008 - 25.08.2013	Nippon Kaiji Kyokai	Nil	Not applicable
	Anti - Fouling	KC-08N3-614	16.09.2008	Nippon Kaiji Kyokai	Nil	Not applicable
	Installations registrations	982298	04.09.2008	Nippon Kaiji Kyokai	Nil	Not applicable
	International Air Pollution Prevention Certificate	08HO5526-APP	04.09.2008 - 25.08.2013	Nippon Kaiji Kyokai	(5)	Complied
	International Ship Security Certificate (ISS)	KLP0/DWO/20100303131008	03.03.2010 - 06.04.2015	Bureau Veritas	(6)	Complied
	Certificate of Classification	982298	04.09.2008 - 25.08.2013	Nippon Kaiji Kyokai	(7)	Complied
	Safety Management Certificate	ST-10QK-M0011SMC	05.03.2010 - 04.08.2010	Nippon Kaiji Kyokai	(8)	Complied
	Safety Construction Certificate	08HO5526-SCC	04.09.2008 - 25.08.2013	Nippon Kaiji Kyokai	(10)	Complied
	Safety Manning	SMD 571/20084	09.10.2009 - 27.09.2014	Government of Malaysia	Nil	Not applicable
	Ship Sanitation Control Exemption Certificate	189412	01.09.2009	Government of Malaysia	(1)	Complied
	Ship Station Licence	01389833-000su/32009	03.11.2009 - 02.11.2014	Malaysian Communications and Multimedia Commission	Nil	Not applicable

Company No. 666062-A

4. INFORMATION ON OUR GROUP (Cont'd)

Company / Vessel	Description of approval / licence / permit	Licence / Reference No.	Date of issuance or commencement / expiry	Authority	Major Conditions Imposed	Status of compliance
Thalaine / Thalaine 3	Certificate of Malaysian Registry	329430	11.06.2002	Registrar of Malaysian Ships	Nil	Not applicable
	Cargo Safety Equipment	09KL0539-SEC	07.08.2009 - 06.08.2011	Nippon Kaiji Kyokai	Nil	Not applicable
	International Tonnage Certificate	8HO-0269TM	25.04.2008	Nippon Kaiji Kyokai	Nil	Not applicable
	International Load Line Certificate	09HO7763-LLC	15.10.2009 - 12.08.2014	Nippon Kaiji Kyokai	(3)	Complied
	Cargo Ship Safety Radio Certificate	09KL0539-SRC	07.08.2009 - 06.08.2010	Nippon Kaiji Kyokai	Nil	Not applicable
	International Oil Pollution Prevention Certificate	09HO7763-OPP	15.10.2009 - 12.08.2014	Nippon Kaiji Kyokai	(4)	Complied
	Sewage Pollution Prevention	09HO7763-SPP	15.10.2009 - 12.08.2014	Nippon Kaiji Kyokai	Nil	Not applicable
	Anti - Fouling	09KL0539AFS	07.08.2009	Nippon Kaiji Kyokai	Nil	Not applicable
	Installations registrations	950157	15.10.2009	Nippon Kaiji Kyokai	Nil	Not applicable
	International Air Pollution Prevention Certificate	09HO7763-APP	15.10.2009 - 12.08.2014	Nippon Kaiji Kyokai	(5)	Complied
	International Ship Security Certificate (ISS)	KLP0/DW0/20090429132244	29.04.2009 - 13.06.2014	Bureau Veritas	(6)	Complied
	Certificate of Classification	950157	15.10.2009 - 12.08.2014	Nippon Kaiji Kyokai	(7)	Complied
	Safety Management Certificate	8HO-3104SMC	18.09.2008 - 23.07.2012	Nippon Kaiji Kyokai	(8)	Complied
	Safety Construction Certificate	09HO7763-SCC	15.10.2009 - 12.08.2014	Nippon Kaiji Kyokai	(10)	Complied
	Safety Manning	SMD 16/2007	15.10.2008 - 17.01.2012	Government of Malaysia	Nil	Not applicable
	Ship Sanitation Control Exemption Certificate	189337	10.08.2009	Government of Malaysia	(1)	Complied
	Ship Station Licence	A49442701347284-000SUJ/32007	25.02.2007 - 24.02.2012	Malaysian Communications and Multimedia Commission	Nil	Not applicable

[THE REST OF THIS PAGE HAS BEEN INTENTIONALLY LEFT BLANK]

Company No. 666062-A

4. INFORMATION ON OUR GROUP (Cont'd)

Company / Vessel	Description of approval / licence / permit	Licence / Reference No.	Date of issuance or commencement / expiry	Authority	Major Conditions Imposed	Status of compliance
Thailine / Thailine 5	Certificate of Malaysian Registry	329453	22.07.2002	Registrar of Malaysian Ships	Nil	Not applicable
	Cargo Safety Equipment	09KL0682-SEC	26.08.2009 - 25.08.2011	Nippon Kaiji Kyokai	Nil	Not applicable
	International Tonnage Certificate	8HO-0267TM	25.04.2008	Nippon Kaiji Kyokai	Nil	Not applicable
	International Load Line Certificate	09HO0402-LLC	26.02.2009 - 26.11.2013	Nippon Kaiji Kyokai	(3)	Complied
	Cargo Ship Safety Radio Certificate	ST-10QK0273-SRC	26.03.2010 - 25.08.2010	Nippon Kaiji Kyokai	Nil	Not applicable
	International Oil Pollution Prevention Certificate	09HO0402-OPP	26.02.2009 - 26.11.2013	Nippon Kaiji Kyokai	(4)	Complied
	Sewage Pollution Prevention	09HO0402-SPP	26.02.2009 - 26.11.2013	Nippon Kaiji Kyokai	Nil	Not applicable
	Anti - Fouling	08KL0817-AFS	21.11.2008	Nippon Kaiji Kyokai	Nil	Not applicable
	Installations registrations	940220	26.02.2009	Nippon Kaiji Kyokai	Nil	Not applicable
	International Air Pollution Prevention Certificate	09HO0402-APP	26.02.2009 - 26.11.2013	Nippon Kaiji Kyokai	(5)	Complied
	International Ship Security Certificate (ISS)	KLP0/DW0/2009041143202	11.04.2009 - 09.06.2014	Bureau Veritas	(6)	Complied
	Certificate of Classification	940220	26.02.2009 - 26.11.2013	Nippon Kaiji Kyokai	(7)	Complied
	Safety Management Certificate	8HO-3105SMC	18.09.2008 - 17.08.2012	Nippon Kaiji Kyokai	(8)	Complied
	Safety Construction Certificate	09HO0402-SCC	26.02.2009 - 26.11.2013	Nippon Kaiji Kyokai	(10)	Complied
	Safety Manning	SMD 50/2007	15.10.2008 - 07.03.2012	Government of Malaysia	Nil	Not applicable
	Ship Sanitation Control Exemption Certificate	189467	18.09.2009	Government of Malaysia	(1)	Complied
	Ship Station Licence	A55909801347284-000SU/32007	09.03.2007 - 08.03.2012	Malaysian Communications and Multimedia Commission	Nil	Not applicable

[THE REST OF THIS PAGE HAS BEEN INTENTIONALLY LEFT BLANK]

Company No. 666062-A

4. INFORMATION ON OUR GROUP (Cont'd)

Company / Vessel	Description of approval / licence / permit	Licence / Reference No.	Date of issuance or commencement / expiry	Authority	Major Conditions Imposed	Status of compliance
Thalaine / Thalaine 2	Certificate of Malaysian Registry	329335	13.03.2001	Registrar of Malaysian Ships	Nil	Not applicable
	Cargo Safety Equipment	10QK0328-SEC	12.05.2010 - 11.05.2012	Nippon Kaiji Kyokai	Nil	Not applicable
	International Tonnage Certificate	8HO-0266TM	25.04.2008	Nippon Kaiji Kyokai	Nil	Not applicable
	International Load Line Certificate	ST-10QK0328-LLC	12.05.2010 - 11.10.2010	Nippon Kaiji Kyokai	(3)	Complied
	Cargo Ship Safety Radio Certificate	ST-10QK0328-SCC	12.05.2010 - 11.10.2010	Nippon Kaiji Kyokai	Nil	Not applicable
	International Oil Pollution Prevention Certificate	ST-10QK0328-OPP	12.05.2010 - 11.10.2010	Nippon Kaiji Kyokai	(4)	Complied
	Sewage Pollution Prevention	ST-10QK0328-SPP	12.05.2010 - 11.10.2010	Nippon Kaiji Kyokai	Nil	Not applicable
	Anti - Fouling	10QK0301AFS	12.05.2010	Nippon Kaiji Kyokai	Nil	Not applicable
	Installations registrations	910044	20.09.2001	Nippon Kaiji Kyokai	Nil	Not applicable
	International Air Pollution Prevention Certificate	ST-10QK0328-APP	12.05.2010 - 11.10.2010	Nippon Kaiji Kyokai	(5)	Complied
	International Ship Security Certificate (ISS)	KLP0/DWO/20090507161558	07.05.2009 - 27.05.2014	Bureau Veritas	(6)	Complied
	Certificate of Classification	910044	04.09.2008 - 18.07.2010	Nippon Kaiji Kyokai	(7)	Complied
	Safety Management Certificate	8HO-3099SMC	18.09.2008 - 23.08.2011	Nippon Kaiji Kyokai	(8)	Complied
	Safety Construction Certificate	08HO5378-SCC	04.09.2008 - 18.07.2010	Nippon Kaiji Kyokai	(10)	Complied
	Safety Manning	SMD606/2004	28.12.2009 - 25.12.2014	Government of Malaysia	Nil	Not applicable
	Ship Sanitation Control Exemption Certificate	189409	24.08.2009	Government of Malaysia	(1)	Complied
	Ship Station Licence (Apparatus Assignment)	A530446201313898000SU/32005	20.12.2005 - 19.12.2010	Malaysian Communications and Multimedia Commission	Nil	Not applicable

[THE REST OF THIS PAGE HAS BEEN INTENTIONALLY LEFT BLANK]

Company No. 666062-A

4. INFORMATION ON OUR GROUP (Cont'd)

Company / Vessel	Description of approval / licence / permit	Licence / Reference No	Date of issuance or commencement / expiry	Authority	Major Conditions Imposed	Status of compliance
Thailine / Thailine	Certificate of Malaysian Registry	327076	24.10.2002	Registrar of Malaysian Ships	Nil	Not applicable
	Cargo Safety Equipment	SGPO/CLU/20091015114048	15.10.2009 - 18.09.2011	Bureau Veritas	Nil	Not applicable
	International Tonnage Certificate	SITLO/036T/2002	15.07.2002	Bureau Veritas	Nil	Not applicable
	International Load Line Certificate	SGPO/KSL/200803192658 PM	19.03.2008 - 23.10.2012	Bureau Veritas	(3)	Complied
	Cargo Ship Safety Radio Certificate	SGPO/CLU/20091015142051	15.10.2009 - 18.09.2010	Bureau Veritas	Nil	Not applicable
	International Oil Pollution Prevention Certificate	SGPO/KSL/200803194021 PM	19.03.2008 - 23.10.2012	Bureau Veritas	(4)	Complied
	Sewage Pollution Prevention	SGPO/KSL/200803194213PM	19.03.2008 - 23.10.2012	Bureau Veritas	Nil	Not applicable
	Anti - Fouling	KLP0/KCM/20071113181543	13.11.2007	Bureau Veritas	Nil	Not applicable
	Ship Station Licence (Apparatus Assignment)	01281715-000SU/32008	14.02.2008 - 13.02.2013	Malaysian Communications and Multimedia Commission	Nil	Not applicable
	International Air Pollution Prevention Certificate	SGPO/KSL/200803194124 PM	19.03.2008 - 23.10.2012	Bureau Veritas	(5)	Complied
	International Ship Security Certificate (ISS)	KLP0/DWO/20090522174049	22.05.2009 - 12.06.2014	Bureau Veritas	(6)	Complied
	Certificate of Classification	SGPO/KSL/200803192145 PM	19.03.2008 - 23.10.2012	Bureau Veritas	(7)	Complied
	Safety Management Certificate	SGPO/SUL/200801103352 PM	10.01.2008 - 25.12.2012	Bureau Veritas	(8)	Complied
	Safety Construction Certificate	SGPO/KSL/200803192814 PM	19.03.2008 - 23.10.2012	Bureau Veritas	(10)	Complied
	Domestic Shipping Licence	DSL 4047-2009	01.12.2009 - 30.11.2010	Domestic Shipping Licensing Board	Nil	Not applicable
	Safety Manning	SMD455/2007	16.11.2007 - 14.11.2012	Government of Malaysia	Nil	Not applicable
	Ship Sanitation Control Exemption Certificate	189469	18.09.2009	Government of Malaysia	(1)	Complied

[THE REST OF THIS PAGE HAS BEEN INTENTIONALLY LEFT BLANK]

Company No. 666062-A

4. INFORMATION ON OUR GROUP (Cont'd)

Company / Vessel	Description of approval / licence / permit	Licence / Reference No.	Date of issuance or commencement / expiry	Authority	Major Conditions Imposed	Status of compliance
Shinline / Shinline 4	Certificate of Malaysian Registry	327778	29.02.1996	Registrar of Malaysian Ships	Nil	Not applicable
	Cargo Safety Equipment	09KL0271-SEC	28.02.2009 - 27.02.2011	Nippon Kaiji Kyokai	Nil	Not applicable
	International Tonnage Certificate	8HO-0261TM	25.04.2008	Nippon Kaiji Kyokai	Nil	Not applicable
	International Load Line Certificate	07HO6653-LLC	04.10.2007 - 29.07.2012	Nippon Kaiji Kyokai	(3)	Complied
	Cargo Ship Safety Radio Certificate	ST-10QK0323-SRC	06.05.2010 - 05.10.2010	Nippon Kaiji Kyokai	Nil	Not applicable
	International Oil Pollution Prevention Certificate	08HO5374-OPP	04.09.2008 - 29.07.2012	Nippon Kaiji Kyokai	(4)	Complied
	Sewage Pollution Prevention	08HO5374-SPP	04.09.2008 - 29.07.2012	Nippon Kaiji Kyokai	Nil	Not applicable
	Anti - Fouling	KC-08N3-492	16.09.2008	Nippon Kaiji Kyokai	Nil	Not applicable
	Installations registrations	832074	26.02.1996	Nippon Kaiji Kyokai	Nil	Not applicable
	International Air Pollution Prevention Certificate	08HO5374-APP	04.09.2008 - 29.07.2012	Nippon Kaiji Kyokai	(5)	Complied
	International Ship Security Certificate (ISS)	KLP0/DWO/20090526145759	27.05.2009 - 13.06.2014	Bureau Veritas	(6)	Complied
	Certificate of Classification	832074	04.09.2008 - 29.07.2012	Nippon Kaiji Kyokai	(7)	Complied
	Safety Management Certificate	8HO-3103SMC	18.09.2008 - 21.10.2011	Nippon Kaiji Kyokai	(8)	Complied
	Safety Construction Certificate	08HO5374-SCC	04.09.2008 - 29.07.2012	Nippon Kaiji Kyokai	(10)	Complied
	Safety Manning	SMD 598/2004	15.10.2008 - 06.03.2013	Government of Malaysia	Nil	Not applicable
	Ship Sanitation Control Exemption Certificate	189475	01.10.2009	Government of Malaysia	(1)	Complied
	Ship Station Licence	A55989101284671-000SU/32008	20.02.2008 - 19.02.2013	Malaysian Communications and Multimedia Commission	Nil	Not applicable

[THE REST OF THIS PAGE HAS BEEN INTENTIONALLY LEFT BLANK]



Company No. 666062-A

4. INFORMATION ON OUR GROUP (Cont'd)

Company / Vessel	Description of approval / licence / permit	Licence / Reference No.	Date of issuance or commencement / expiry	Authority	Major Conditions Imposed	Status of compliance
Shinline / Shinline 9	Certificate of Malaysian Registry	329315	15.12.2000	Registrar of Malaysian Ships	Nil	Not applicable
	Cargo Safety Equipment	10QK0211-SEC	26.03.2010 - 25.03.2012	Nippon Kaiji Kyokai	Nil	Not applicable
	International Tonnage Certificate	8HO-0265TM	25.04.2008	Nippon Kaiji Kyokai	Nil	Not applicable
	International Load Line Certificate	ST-10QK0211-LLC	26.03.2010 - 25.08.2010	Nippon Kaiji Kyokai	(3)	Complied
	Cargo Ship Safety Radio Certificate	10QK0211-SRC	26.03.2010 - 25.03.2011	Nippon Kaiji Kyokai	Nil	Not applicable
	International Oil Pollution Prevention Certificate	ST-10QK0211-OPP	26.03.2010 - 25.08.2011	Nippon Kaiji Kyokai	(4)	Complied
	Sewage Pollution Prevention	ST-10QK021-SPP	26.03.2010 - 25.08.2010	Nippon Kaiji Kyokai	Nil	Not applicable
	Anti - Fouling	10QK 0211AFS	26.03.2010	Nippon Kaiji Kyokai	Nil	Not applicable
	Installations registrations	901974	16.01.2001	Nippon Kaiji Kyokai	Nil	Not applicable
	International Air Pollution Prevention Certificate	ST-10QK0211-APP	26.03.2010 - 25.08.2010	Nippon Kaiji Kyokai	(5)	Complied
	International Ship Security Certificate (ISS)	KLP0/DWO/20090424103341	24.04.2009 - 31.05.2014	Bureau Veritas	(6)	Complied
	Certificate of Classification	901974	04.09.2008 - 25.08.2010	Nippon Kaiji Kyokai	(7)	Complied
	Safety Management Certificate	8HO-3100SMC	18.09.2008 - 21.08.2011	Nippon Kaiji Kyokai	(8)	Complied
	Safety Construction Certificate	ST-10QK0211-SCC	26.03.2010 - 25.08.2010	Nippon Kaiji Kyokai	(10)	Complied
	Safety Manning	SMD 599/2004	29.12.2009 - 27.12.2014	Government of Malaysia	Nil	Not applicable
Ship Sanitation Control Exemption Certificate	189330	04.08.2009	Government of Malaysia	(1)	Complied	
Ship Station Licence (Apparatus Assignment)	A53001801313775-000SU/32005	07.11.2005 - 06.11.2010	Malaysian Communications and Multimedia Commission	Nil	Not applicable	

[THE REST OF THIS PAGE HAS BEEN INTENTIONALLY LEFT BLANK]

Company No. 666062-A

4. INFORMATION ON OUR GROUP (Cont'd)

Company / Vessel	Description of approval / licence / permit	Licence / Reference No.	Date of issuance or commencement / expiry	Authority	Major Conditions Imposed	Status of compliance
Shinline / Shinline 8	Certificate of Malaysian Registry	329235	30.10.1999	Registrar of Malaysian Ships	Nil	Not applicable
	Cargo Safety Equipment	10QK0154-SEC	29.01.2010 – 28.01.2012	Nippon Kaiji Kyokai	Nil	Not applicable
	International Tonnage Certificate	8HO-0264TM	25.04.2008	Nippon Kaiji Kyokai	Nil	Not applicable
	International Load Line Certificate	ST-10QK-0154-LLC	29.01.2010 - 28.06.2010	Nippon Kaiji Kyokai	(3)	Complied
	Cargo Ship Safety Radio Certificate	10QK0154-SRC	29.01.2010 - 28.01.2011	Nippon Kaiji Kyokai	Nil	Not applicable
	International Oil Pollution Prevention Certificate	ST-10QK0154-OPP	29.01.2010 - 28.06.2010	Nippon Kaiji Kyokai	(4)	Complied
	Sewage Pollution Prevention	ST-10QK0154-SPP	29.01.2010 - 28.06.2010	Nippon Kaiji Kyokai	Nil	Not applicable
	Anti - Fouling	KC-08N3-494	16.09.2008	Nippon Kaiji Kyokai	Nil	Not applicable
	Installations registrations	900596	09.04.2008	Nippon Kaiji Kyokai	Nil	Not applicable
	International Air Pollution Prevention Certificate	ST-10QK0154-APP	29.01.2010 - 28.06.2010	Nippon Kaiji Kyokai	(5)	Complied
	International Ship Security Certificate (ISS)	KLP0/DWO/20090416184311	16.04.2009 - 17.05.2014	Bureau Veritas	(6)	Complied
	Certificate of Classification	900596	04.09.2008 - 28.06.2010	Nippon Kaiji Kyokai	(7)	Complied
	Safety Management Certificate	8HO-3102SMC	18.09.2008 - 29.09.2011	Nippon Kaiji Kyokai	(8)	Complied
	Safety Construction Certificate	ST-10QK0154-SCC	29.01.2010 - 28.06.2010	Nippon Kaiji Kyokai	(10)	Complied
	Safety Manning	SMD 597/2004	29.12.2009 - 27.12.2014	Government of Malaysia	Nil	Not applicable
	Ship Sanitation Control Exemption Certificate	189539	17.10.2009	Government of Malaysia	(1)	Complied
	Ship Station Licence (Apparatus Assignment)	A51470601313528-000SU/32005	16.08.2005 - 15.08.2010	Malaysian Communications and Multimedia Commission	Nil	Not applicable

[THE REST OF THIS PAGE HAS BEEN INTENTIONALLY LEFT BLANK]

Company No. 666062-A

4. INFORMATION ON OUR GROUP (Cont'd)

Company / Vessel	Description of approval / licence / permit	Licence / Reference No	Date of issuance or commencement / expiry	Authority	Major Conditions Imposed	Status of compliance
Shinline / Shinline 5	Certificate of Malaysian Registry	328991	08.09.1997	Registrar of Malaysian Ships	Nil	Not applicable
	Ship Sanitation Control Exemption Certificate	180354	16.12.2009	Government of Malaysia	(1)	Complied
	Cargo Safety Equipment	09KL0507-SEC	03.07.2009 - 02.07.2011	Nippon Kaiji Kyokai	Nil	Not applicable
	International Tonnage Certificate	8HO-0262TM	25.04.2008	Nippon Kaiji Kyokai	Nil	Not applicable
	International Load Line Certificate	ST-09KL0507-LLC	10.09.2009 - 03.08.2014	Nippon Kaiji Kyokai	(3)	Complied
	Cargo Ship Safety Radio Certificate	09KL0507-SRC	03.07.2009 - 02.07.2010	Nippon Kaiji Kyokai	Nil	Not applicable
	International Oil Pollution Prevention Certificate	09HO6991-OPP	10.09.2009 - 03.08.2014	Nippon Kaiji Kyokai	(4)	Complied
	Sewage Pollution Prevention	09HO6991-SPP	10.09.2009 - 03.08.2014	Nippon Kaiji Kyokai	Nil	Not applicable
	Anti - Fouling	09KL0507AFS	03.07.2009	Nippon Kaiji Kyokai	Nil	Not applicable
	Installations registrations	854154	10.09.2009	Nippon Kaiji Kyokai	Nil	Not applicable
	International Air Pollution Prevention Certificate	09HO6991-APP	10.09.2009 - 03.08.2014	Nippon Kaiji Kyokai	(5)	Complied
	International Ship Security Certificate (ISS)	KLP0/DWO/20090422133247	22.04.2009 - 10.06.2014	Bureau Veritas	(6)	Complied
	Certificate of Classification	854154	10.09.2009 - 03.08.2014	Nippon Kaiji Kyokai	(7)	Complied
	Safety Management Certificate	6HO-1631SMC	25.09.2006 - 24.07.2011	Nippon Kaiji Kyokai	(8)	Complied
	Safety Construction Certificate	09HO6991-SCC	10.09.2009 - 03.08.2014	Nippon Kaiji Kyokai	(10)	Complied
Safety Manning	SMD 601/2004	29.12.2009 - 27.12.2014	Government of Malaysia	Nil	Not applicable	
Ship Station Licence	01293590-000SU/32010	21.03.2010 - 20.03.2015	Malaysian Communications and Multimedia Commission	Nil	Not applicable	

[THE REST OF THIS PAGE HAS BEEN INTENTIONALLY LEFT BLANK]

Company No. 666062-A

4. INFORMATION ON OUR GROUP (Cont'd)

Company / Vessel	Description of approval / licence / permit	Licence / Reference No.	Date of issuance or commencement / expiry	Authority	Major Conditions Imposed	Status of compliance
Shimline / Shimline 6	Certificate of Malaysian Registry	329234	15.10.1999	Registrar of Malaysian Ships	Nil	Not applicable
	Ship Sanitation Control Exemption Certificate	189403	18.08.2009	Government of Malaysia	(1)	Complied
	Cargo Safety Equipment	08KL0608-SEC	20.11.2009 - 19.11.2011	Nippon Kaiji Kyokai	Nil	Not applicable
	International Tonnage Certificate	8HO-0263TM	25.04.2008	Nippon Kaiji Kyokai	Nil	Not applicable
	International Load Line Certificate	5HO-3812LL	25.08.2005 - 26.06.2010	Nippon Kaiji Kyokai	(3)	Complied
	Cargo Ship Safety Radio Certificate	10QK0308-SRC	13.04.2010 - 12.04.2011	Nippon Kaiji Kyokai	Nil	Not applicable
	International Oil Pollution Prevention Certificate	08HO6668-OPP	23.10.2008 - 26.06.2010	Nippon Kaiji Kyokai	(4)	Complied
	Sewage Pollution Prevention	08HO6668-SPP	23.10.2008 - 26.06.2010	Nippon Kaiji Kyokai	Nil	Not applicable
	Anti - Fouling	KC-08N3-616	16.09.2008	Nippon Kaiji Kyokai	Nil	Not applicable
	Installations registrations	861879	11.11.1999	Nippon Kaiji Kyokai	Nil	Not applicable
	International Air Pollution Prevention Certificate	08HO6668-APP	23.10.2008 - 26.06.2010	Nippon Kaiji Kyokai	(5)	Complied
	International Ship Security Certificate (ISS)	KLP0/DWO/20090508160647	08.05.2009 - 01.06.2014	Bureau Veritas	(6)	Complied
	Certificate of Classification	861879	23.10.2008 - 26.06.2010	Nippon Kaiji Kyokai	(7)	Complied
	Safety Management Certificate	8HO-3101SMC	18.09.2008 - 31.08.2011	Nippon Kaiji Kyokai	(8)	Complied
	Safety Construction Certificate	08HO6668-SCC	23.10.2008 - 26.06.2010	Nippon Kaiji Kyokai	(10)	Complied
	Safety Manning	SMD 600/2004	29.12.2009 - 27.12.2014	Government of Malaysia	Nil	Not applicable
	Ship Station Licence (Apparatus Assignment)	A51470501313526-000SU/32005	16.08.2005 - 15.08.2010	Malaysian Communications and Multimedia Commission	Nil	Not applicable

[THE REST OF THIS PAGE HAS BEEN INTENTIONALLY LEFT BLANK]

Company No. 666062-A

4. INFORMATION ON OUR GROUP (Cont'd)

Company / Vessel	Description of approval / licence / permit	Licence / Reference No.	Date of issuance or commencement / expiry	Authority	Major Conditions Imposed	Status of compliance
Danum Shipping / Danum 23	Certificate of Malaysian Registry	329713	07.04.2006	Registrar of Malaysian Ships	Nil	Not applicable
	Ship Sanitation Control Exemption Certificate	189436	07.09.2009	Government of Malaysia	(1)	Complied
	Cargo Safety Equipment	KLP0/DWO/20100423153239	24.04.2010 – 23.04.2012	Bureau Veritas	Nil	Not applicable
	International Tonnage Certificate	SITLO/018T/2006	13.03.2006	Bureau Veritas	Nil	Not applicable
	International Load Line Certificate	SGP0/JEC/20070730101622	03.08.2007 - 27.04.2011	Bureau Veritas	(3)	Complied
	Cargo Ship Safety Radio Certificate	KLP0/DWO/20100423152835	24.04.2010 – 23.04.2011	Bureau Veritas	Nil	Not applicable
	International Oil Pollution Prevention Certificate	SGP0/JEC/20070730102209	03.08.2007 - 27.04.2011	Bureau Veritas	(4)	Complied
	Sewage Pollution Prevention	SGP0/KEL/200811040127 PM	04.11.2008 - 27.04.2011	Bureau Veritas	Nil	Not applicable
	Anti - Fouling	KLP0/BSB/20081030161508	31.10.2008	Bureau Veritas	Nil	Not applicable
	Safe Manning	SMD 72/2006	12.04.2006 - 09.04.2011	Government of Malaysia	Nil	Not applicable
	International Air Pollution Prevention Certificate	SGP0/WLO/20080522095647	22.05.2008 - 27.04.2011	Bureau Veritas	(5)	Complied
	International Ship Security Certificate (ISS)	KLP0/NDM/200703314456 PM	30.03.2007 - 30.10.2011	Bureau Veritas	(6)	Complied
	Domestic Shipping Licence	DSL 2781/2009	01.09.2009 - 31.08.2010	Domestic Shipping Licensing Board	Nil	Not applicable
	Certificate of Classification	SGP0/JEC/20070110150049	03.08.2007 - 27.04.2011	Bureau Veritas	(7)	Complied
Safety Management Certificate	SGP0/SUL/20070330170228	30.03.2007 - 29.10.2011	Bureau Veritas	(8)	Complied	
Safety Construction Certificate	SGP0/JEC/20070110150110	03.08.2007 - 27.04.2011	Bureau Veritas	(10)	Complied	
Ship Station Licence	A49414001405081-000SU/32006	22.08.2006 - 21.08.2011	Malaysian Communications and Multimedia Commission	Nil	Not applicable	

Company No. 666062-A

4. INFORMATION ON OUR GROUP (Cont'd)

Company / Vessel	Description of approval / licence / permit	Licence / Reference No.	Date of issuance or commencement / expiry	Authority	Major Conditions Imposed	Status of compliance
Treico (L) / Danum 76	Certificate of Malaysian Registry	330848	12.11.2007	Registrar of Malaysian Ships	Nil	Not applicable
	Ship Sanitation Control Exemption Certificate	189210	11.06.2009	Government of Malaysia	(1)	Complied
	Cargo Safety Equipment	29993	08.12.2009 - 08.03.2011	Det Norske Veritas	Nil	Not applicable
	International Tonnage Certificate	29993	06.10.2009	Det Norske Veritas	Nil	Not applicable
	International Load Line Certificate	29993	24.09.2009 - 04.11.2012	Det Norske Veritas	(3)	Complied
	Cargo Ship Safety Radio Certificate	29993	16.07.2009 - 25.06.2010	Det Norske Veritas	(9)	Complied
	International Oil Pollution Prevention Certificate	29993	08.12.2009 - 08.03.2011	Det Norske Veritas	(4)	Complied
	Anti - Fouling	AFS202	09.09.2009	Det Norske Veritas		
	Safe Manning	MC 432/2007	02.11.2007 - 31.10.2012	Government of Malaysia	Nil	Not applicable
	International Air Pollution Prevention Certificate	29993	08.12.2009 - 08.03.2011	Det Norske Veritas	(5)	Complied
	Certificate of Classification	075145	22.01.2008 - 04.11.2012	Det Norske Veritas	(7)	Complied
	Ship Station Licence (Apparatus Assignment)	A 559669 01434665-000SU/32007	29.10.2007 - 28.10.2012	Malaysian Communications and Multimedia Commission	Nil	Not applicable
	Safety Construction Certificate	07KL0103-SCC	05.11.2007 - 04.11.2012	Det Norske Veritas	(10)	Complied
	Installations registrations	Certificate of Installation Registration 075145	22.01.2008	Nippon Kaiji Kyokai	Nil	Not applicable

[THE REST OF THIS PAGE HAS BEEN INTENTIONALLY LEFT BLANK]

Company No. 666062-A

4. INFORMATION ON OUR GROUP (Cont'd)

Company / Vessel	Description of approval / licence / permit	Licence / Reference No.	Date of issuance or commencement / expiry	Authority	Major Conditions Imposed	Status of compliance
Trelco (L) / Danum 93	Certificate of Malaysian Registry	330972	04.02.2009	Registrar of Malaysian Ships	Nil	Not applicable
	Ship Sanitation Control Exemption Certificate	189367	23.08.2009	Government of Malaysia	(1)	Complied
	Cargo Safety Equipment	09KL0040-SEC	12.02.2009 - 11.02.2011	Nippon Kaiji Kyokai	Nil	Not applicable
	International Tonnage Certificate	9HO-0052TM	18.01.2009	Nippon Kaiji Kyokai	Nil	Not applicable
	International Load Line Certificate	09HO2655-LLC	16.04.2009 - 11.02.2014	Nippon Kaiji Kyokai	(3)	Complied
	Cargo Ship Safety Radio Certificate	ST-10DB0050-SRC	01.03.2010 - 31.07.2010	Nippon Kaiji Kyokai	Nil	Not applicable
	International Oil Pollution Prevention Certificate	09HO2655-OPP	16.04.2009 - 11.02.2014	Nippon Kaiji Kyokai	(4)	Complied
	Safe Manning	MC 61/2009	20.02.2009 - 29.01.2014	Government of Malaysia	Nil	Not applicable
	Installations registrations	Certificate of Installations Registration 091073	10.09.2009	Nippon Kaiji Kyokai	Nil	Not applicable
	International Air Pollution Prevention Certificate	09HO1379-APP	17.04.2009 - 29.12.2013	Nippon Kaiji Kyokai	(5)	Complied
	Certificate of Classification	091073	10.09.2009 - 11.02.2014	Nippon Kaiji Kyokai	(7)	Complied
	Ship Station Licence	A 015689 01491228-000SU/32009	20.01.2009 - 31.12.2013	Malaysian Communications and Multimedia Commission	Nil	Not applicable
	Safety Construction Certificate	09KL0543-SCC	20.06.2009 - 11.02.2014	Nippon Kaiji Kyokai	(10)	Complied
	Anti - Fouling	09KL0040-AFS	12.02.2009	Nippon Kaiji Kyokai	Nil	Not applicable
Sewage Pollution Prevention	09HO2655-SPP	16.04.2009 - 11.02.2014	Nippon Kaiji Kyokai	Nil	Not applicable	

[THE REST OF THIS PAGE HAS BEEN INTENTIONALLY LEFT BLANK]

Company No. 666062-A

4. INFORMATION ON OUR GROUP (Cont'd)

Company / Vessel	Description of approval / licence / permit	Licence / Reference No.	Date of issuance or commencement / expiry	Authority	Major Conditions Imposed	Status of compliance
Trelco (L) / Danum 79	Certificate of Malaysian Registry	330869	17.06.2008	Registrar of Malaysian Ships	Nil	Not applicable
	Ship Sanitation Control Exemption Certificate	189211	11.06.2009	Government of Malaysia	(1)	Complied
	Cargo Safety Equipment	08KL0052-SEC	28.05.2008 - 27.05.2010 (Scheduled for survey for renewal of licence)	Nippon Kaiji Kyokai	Nil	Not applicable
	International Tonnage Certificate	08HO-0326TM	23.05.2008	Nippon Kaiji Kyokai	Nil	Not applicable
	International Load Line Certificate	08HO4029-LLC	24.07.2008 - 27.05.2013	Nippon Kaiji Kyokai	(3)	Complied
	Cargo Ship Safety Radio Certificate	09DB0233-SRC	24.05.2009 - 23.05.2010 (Scheduled for survey for renewal of licence)	Nippon Kaiji Kyokai	Nil	Not applicable
	International Oil Pollution Prevention Certificate	08HO4029-OPP	24.07.2008 - 27.05.2013	Nippon Kaiji Kyokai	(4)	Complied
	Safe Manning	MC 2008/2008	21.05.2008 - 20.05.2013	Government of Malaysia	Nil	Not applicable
	Sewage Pollution Prevention	08HO4029-SPP	24.07.2008 - 27.05.2013	Nippon Kaiji Kyokai	Nil	Not applicable
	Anti - Fouling	KC-08KLA-0034	28.05.2008	Nippon Kaiji Kyokai	Nil	Not applicable
	Installations registrations	Certificate of Installations Registration 082579	05.03.2009	Nippon Kaiji Kyokai	Nil	Not applicable
	International Air Pollution Prevention Certificate	08HO4029-APP	24.07.2008 - 27.05.2013	Nippon Kaiji Kyokai	(5)	Complied
	Certificate of Classification	082579	22.07.2008 - 27.05.2013	Nippon Kaiji Kyokai	(7)	Complied
	Ship Station Licence	A 019746 01468078-000SU/32008	21.05.2008 - 20.05.2013	Malaysian Communications and Multimedia Commission	Nil	Not applicable
	Safety Construction Certificate	08KL0052-SCC	28.05.2008 - 27.05.2013	Nippon Kaiji Kyokai	(10)	Complied



Company No. 666062-A

4. INFORMATION ON OUR GROUP (Cont'd)

Company / Vessel	Description of approval / licence / permit	Licence / Reference No.	Date of issuance or commencement / expiry	Authority	Major Conditions Imposed	Status of compliance
Trelco (L) / Danum 92	Certificate of Malaysian Registry	330971	07.01.2009	Registrar of Malaysian Ships	Nil	Not applicable
	Ship Sanitation Control Exemption Certificate	189216	17.07.2009	Government of Malaysia	(1)	Complied
	Cargo Safety Equipment	08KL0113-SEC	30.12.2008 - 29.12.2010	Nippon Kaiji Kyokai	Nil	Not applicable
	International Tonnage Certificate	8HO-0797TM	15.12.2008	Nippon Kaiji Kyokai	Nil	Not applicable
	International Load Line Certificate	09HO1379-LLC	17.04.2009 - 29.12.2013	Nippon Kaiji Kyokai	(3)	Complied
	Cargo Ship Safety Radio Certificate	10DB0006-SRC	14.01.2010 - 13.01.2011	Nippon Kaiji Kyokai	Nil	Not applicable
	International Oil Pollution Prevention Certificate	09HO1379-OPP	17.04.2009 - 29.12.2013	Nippon Kaiji Kyokai	(4)	Complied
	Safe Manning	MC 521/2008	31.12.2008 - 29.12.2013	Government of Malaysia	Nil	Not applicable
	Installations registrations	Certificate of Installations Registration 086150	24.03.2009	Nippon Kaiji Kyokai	Nil	Not applicable
	International Air Pollution Prevention Certificate	09HO1379-APP	17.04.2009 - 29.12.2013	Nippon Kaiji Kyokai	(5)	Complied
	Certificate of Classification	086150	24.03.2009 - 29.12.2013	Nippon Kaiji Kyokai	(7)	Complied
	Ship Station Licence	A 015852 01488558-000SU/32008	16.12.2008 - 31.12.2012	Malaysian Communications and Multimedia Commission	Nil	Not applicable
	Safety Construction Certificate	08KL0113-SCC	30.12.2008 - 29.12.2013	Nippon Kaiji Kyokai	(10)	Complied
	Anti - Fouling	08KL0113-AFS	30.12.2008	Nippon Kaiji Kyokai	Nil	Not applicable
	Sewage Pollution Prevention	09HO1379-SPP	17.04.2009 - 29.12.2013	Nippon Kaiji Kyokai	Nil	Not applicable

[THE REST OF THIS PAGE HAS BEEN INTENTIONALLY LEFT BLANK]

Company No. 666062-A

4. INFORMATION ON OUR GROUP (Cont'd)

Company / Vessel	Description of approval / licence / permit	Licence / Reference No.	Date of issuance or commencement / expiry	Authority	Major Conditions Imposed	Status of compliance
Trelco (L) / Linau 78	Certificate of Malaysian Registry	330988	14.11.2008	Registrar of Malaysian Ships	Nil	Not applicable
	Ship Sanitation Control Exemption Certificate	189197	17.07.2009	Government of Malaysia	(1)	Complied
	International Tonnage Certificate	8HO-0676TM	21.10.2008	Nippon Kaiji Kyokai	Nil	Not applicable
	International Load Line Certificate	09HO0121-LLC	15.01.2009 - 20.10.2013	Nippon Kaiji Kyokai	(3)	Complied
	Certificate of Classification	085619	27.01.2009 - 20.10.2013	Nippon Kaiji Kyokai	(7)	Complied
	Safety Construction Certificate	08KL0107-SCC	21.10.2008 - 20.10.2013	Nippon Kaiji Kyokai	(10)	Complied
	Anti - Fouling	08KL0107-AFS-DOC	21.10.2008	Nippon Kaiji Kyokai	Nil	Not applicable
Trelco (L) / Linau 79	Certificate of Malaysian Registry	330989	28.11.2008	Registrar of Malaysian Ships	Nil	Not applicable
	Ship Sanitation Control Exemption Certificate	189256	29.06.2009	Government of Malaysia	(1)	Complied
	International Tonnage Certificate	29997	08.10.2009	Det Norske Veritas	Nil	Not applicable
	International Load Line Certificate	29997	29.12.2007 - 29.12.2012	Det Norske Veritas	(3)	Complied
	Safety construction certificate	29997	07.04.2009	Det Norske Veritas	(10)	Complied
	Certificate of Classification	29997	17.01.2010 - 17.04.2011	Det Norske Veritas	(7)	Complied

[THE REST OF THIS PAGE HAS BEEN INTENTIONALLY LEFT BLANK]

Company No. 666062-A

4. INFORMATION ON OUR GROUP (Cont'd)

Company/ Vessel	Description of approval / licence / permit	Licence / Reference No	Date of issuance or commencement / expiry	Authority	Major Conditions Imposed	Status of compliance
Al Ghalib (L) / Danum 65	Certificate of Malaysian Registry	330745	27.03.2007	Registrar of Malaysian Ships	Nil	Not applicable
	Ship Sanitation Control Exemption Certificate	189123	10.05.2009	Government of Malaysia	(1)	Complied
	Cargo Safety Equipment	09DB0229-SEC	21.05.2009 - 20.05.2011	Nippon Kaiji Kyokai	Nil	Not applicable
	International Tonnage Certificate	7HO-0137TM	27.02.2007	Nippon Kaiji Kyokai	Nil	Not applicable
	International Load Line Certificate	07HO4574-LLC	12.07.2007 - 19.04.2012	Nippon Kaiji Kyokai	(3)	Complied
	Cargo Ship Safety Radio Certificate	10DB0129-SRC	08.04.2010 - 07.04.2011	Nippon Kaiji Kyokai	Nil	Not applicable
	International Oil Pollution Prevention Certificate	07HO4574-OPP	12.07.2007 - 19.04.2012	Nippon Kaiji Kyokai	(4)	Complied
	Safe Manning	MC 121/2007	07.05.2007 - 03.05.2012	Government of Malaysia	Nil	Not applicable
	Anti - Fouling	09DB0229-AFS	21.05.2009	Nippon Kaiji Kyokai	Nil	Not applicable
	Sewage Pollution Prevention	09HO5438-SPP	23.07.2009 - 19.04.2012	Nippon Kaiji Kyokai	Nil	Not applicable
	International Air Pollution Prevention Certificate	07HO4574-APP	12.07.2007 - 19.04.2012	Nippon Kaiji Kyokai	(5)	Complied
	Certificate of Classification	071060	05.06.2008 - 19.04.2012	Nippon Kaiji Kyokai	(7)	Complied
	Ship Station Licence	A559216 01425377- 000SU/32007	09.04.2007 - 08.04.2012	Malaysian Communications and Multimedia Commission	Nil	Not applicable
	Safety Construction Certificate	7KL-00385CC	20.04.2007 - 19.04.2012	Nippon Kaiji Kyokai	(10)	Complied
Installations registrations	Certificate of Installations Registration 071060	05.06.2008	Nippon Kaiji Kyokai	Nil	Not applicable	

[THE REST OF THIS PAGE HAS BEEN INTENTIONALLY LEFT BLANK]

Company No. 666062-A

4. INFORMATION ON OUR GROUP (Cont'd)

Company / Vessel	Description of approval / licence / permit	Licence / Reference No.	Date of issuance or commencement / expiry	Authority	Major Conditions Imposed	Status of compliance
Al Ghaith (L) / Danum 66	Certificate of Malaysian Registry	330746	27.03.2007	Registrar of Malaysian Ships	Nil	Not applicable
	Ship Sanitation Control Exemption Certificate	189124	08.05.2009	Government of Malaysia	(1)	Complied
	Cargo Safety Equipment	09DB-0260SE	04.06.2009 - 01.04.2011	Nippon Kaiji Kyokai	Nil	Not applicable
	International Tonnage Certificate	7HO-0141TM	10.03.2007	Nippon Kaiji Kyokai	Nil	Not applicable
	International Load Line Certificate	07HO4573-LLC	12.07.2007 - 19.04.2012	Nippon Kaiji Kyokai	(3)	Complied
	Cargo Ship Safety Radio Certificate	CD-10BY0086-SRC	08.04.2010 - 07.05.2010 (renewal application submitted pending issuance of new licence)	Nippon Kaiji Kyokai	Nil	Not applicable
	International Oil Pollution Prevention Certificate	07HO4573-OPP	12.07.2007 - 19.04.2012	Nippon Kaiji Kyokai	(4)	Complied
	Safe Manning	MC 120/2007	07.05.2007 - 03.05.2012	Government of Malaysia	Nil	Not applicable
	Anti - Fouling	KC-07KL0225	20.04.2007	Nippon Kaiji Kyokai	Nil	Not applicable
	Sewage Pollution Prevention	07HO4573-SPP	12.07.2007 - 19.04.2012	Nippon Kaiji Kyokai	Nil	Not applicable
	International Air Pollution Prevention Certificate	07HO4573-APP	02.04.2009 - 01.04.2010 (renewal application submitted pending issuance of new licence)	Nippon Kaiji Kyokai	(5)	Complied
	Certificate of Classification	071167	19.06.2008 - 19.04.2012	Nippon Kaiji Kyokai	(7)	Complied
	Ship Station Licence	A559232 01425571-000SU/32007	12.04.2007 - 11.04.2012	Malaysian Communications and Multimedia Commission	Nil	Not applicable
	Safety Construction Certificate	7KL-0039SCC	20.04.2007 - 19.04.2012	Nippon Kaiji Kyokai	(10)	Complied
Installations registrations	Certificate of Installations Registration 071167	19.06.2008	Nippon Kaiji Kyokai	Nil	Not applicable	

Company No. 666062-A

4. INFORMATION ON OUR GROUP (Cont'd)

Company / Vessel	Description of approval / licence / permit	Licence / Reference No.	Date of issuance or commencement / expiry	Authority	Major Conditions Imposed	Status of compliance
Marsol (L) / Linau 89	Certificate of Malaysian Registry	332971	24.03.2009	Registrar of Malaysian Ships	Nil	Not applicable
	Ship Sanitation Control Exemption Certificate	189460	19.09.2009	Government of Malaysia	(1)	Complied
	International Tonnage Certificate	P096481	04.02.2009	American Bureau of Shipping	Nil	Not applicable
	International Load Line Certificate	YY201508-949745-005	24.01.2009 - 23.01.2014	American Bureau of Shipping	(3)	Complied
	Certificate of Classification	09201508-1681995-001	28.05.2009 - 23.01.2014	American Bureau of Shipping	(7)	Complied
	Safety Construction Certificate	YY201508-949745-007	24.01.2009 - 23.01.2014	American Bureau of Shipping	(10)	Complied

[THE REST OF THIS PAGE HAS BEEN INTENTIONALLY LEFT BLANK]

Company No. 666062-A

4. INFORMATION ON OUR GROUP (Cont'd)

Company / Vessel	Description of approval / licence / permit	Licence / Reference No.	Date of issuance or commencement / expiry	Authority	Major Conditions Imposed	Status of compliance
Marsol (L) / Danum 80	Certificate of Malaysian Registry	330870	04.02.2009	Registrar of Malaysian Ships	Nil	Not applicable
	Ship Sanitation Control Exemption Certificate	189212	17.07.2009	Government of Malaysia	(1)	Complied
	Cargo Safety Equipment	09KL0054-SEC	05.02.2009 - 04.02.2011	Nippon Kaiji Kyokai	Nil	Not applicable
	International Tonnage Certificate	09HO-0053TM	21.01.2009	Nippon Kaiji Kyokai	Nil	Not applicable
	International Load Line Certificate	09HO3000-LLC	23.04.2009 - 04.02.2014	Nippon Kaiji Kyokai	(3)	Complied
	Cargo Ship Safety Radio Certificate	10DB0005-SRC	19.01.2010 - 18.11.2011	Nippon Kaiji Kyokai	Nil	Not applicable
	International Oil Pollution Prevention Certificate	09HO3000-OPP	23.04.2009 - 04.02.2014	Nippon Kaiji Kyokai	(4)	Complied
	Safe Manning	MC 53/2009	30.01.2009 - 29.01.2014	Government of Malaysia	Nil	Not applicable
	Installations registrations	091082	10.09.2009	Nippon Kaiji Kyokai	Nil	Not applicable
	International Air Pollution Prevention Certificate	09HO3000-APP	23.04.2009 - 04.02.2014	Nippon Kaiji Kyokai	(5)	Complied
	Certificate of Classification	91082	10.09.2009 - 04.02.2014	Nippon Kaiji Kyokai	(7)	Complied
	Ship Station Licence (Apparatus Assignment)	A 015688 01491231-000SUJ/32009	20.01.2009 - 31.12.2013	Malaysian Communications and Multimedia Commission	Nil	Not applicable
	Safety Construction Certificate	09KL0542-SCC	20.06.2009 - 04.02.2014	Nippon Kaiji Kyokai	(10)	Complied
	Anti - Fouling	09KL0054-AFS	05.02.2009	Nippon Kaiji Kyokai	Nil	Not applicable
	Sewage Pollution Prevention	09HO3000-SPP	23.04.2009 - 04.02.2014	Nippon Kaiji Kyokai	Nil	Not applicable

[THE REST OF THIS PAGE HAS BEEN INTENTIONALLY LEFT BLANK]

Company No. 666062-A

4. INFORMATION ON OUR GROUP (Cont'd)

Company/ Vessel	Description of approval / licence / permit	Licence / Reference No.	Date of issuance or commencement / expiry	Authority	Major Conditions Imposed	Status of compliance
Marsol (L) / Danum 71	Certificate of Malaysian Registry	330843	15.08.2007	Registrar of Malaysian Ships	Nil	Not applicable
	Ship Sanitation Control Exemption Certificate	189371	12.08.2009	Government of Malaysia	(1)	Complied
	International Tonnage Certificate	29998	07.10.2009	Det Norske Veritas	Nil	Not applicable
	International Load Line Certificate	29998	14.07.2009 - 24.11.2011	Det Norske Veritas	(3)	Complied
	Certificate of Classification	29998	19.01.2010 - 19.04.2011	Det Norske Veritas	(7)	Complied
	Safety Construction Certificate	29998	19.01.2010 - 19.06.2010	Det Norske Veritas	(10)	Complied
Marsol (L) / Danum 72	Certificate of Malaysian Registry	330845	15.08.2007	Registrar of Malaysian Ships	Nil	Not applicable
	Ship Sanitation Control Exemption Certificate	180307	03.12.2009	Government of Malaysia	(1)	Complied
	International Tonnage Certificate	29995	07.10.2010	Det Norske Veritas	Nil	Not applicable
	International Load Line Certificate	29995	14.07.2009 - 20.12.2011	Det Norske Veritas	(3)	Complied
	Certificate of Classification	29995	19.01.2010 - 19.04.2011	Det Norske Veritas	(7)	Complied
	Safety Construction Certificate	29995	19.01.2010 - 19.06.2010	Det Norske Veritas	(10)	Complied

[THE REST OF THIS PAGE HAS BEEN INTENTIONALLY LEFT BLANK]

Company No. 666062-A

4. INFORMATION ON OUR GROUP (Cont'd)

Company / Vessel	Description of approval / licence / permit	Licence / Reference No.	Date of issuance or commencement / expiry	Authority	Major Conditions Imposed	Status of compliance
Trelco (L) / Linau 73	Certificate of Malaysian Registry	330983	28.03.2008	Registrar of Malaysian Ships	Nil	Not applicable
	Ship Sanitation Control Exemption Certificate	180270	03.12.2009	Government of Malaysia	(1)	Complied
	International Tonnage Certificate	29996	07.10.2009	Det Norske Veritas	Nil	Not applicable
	International Load Line Certificate	29996	14.07.2009 - 12.11.2012	Det Norske Veritas	(3)	Complied
	Certificate of Classification	29996	18.12.2009 - 18.03.2011	Det Norske Veritas	(7)	Complied
	Safety Construction Certificate	29996	18.12.2009 - 18.03.2011	Det Norske Veritas	(10)	Complied
Trelco (L) / Linau 76	Certificate of Malaysian Registry	330986	21.05.2009	Registrar of Malaysian Ships	Nil	Not applicable
	Ship Sanitation Control Exemption Certificate	189361	23.08.2009	Government of Malaysia	(1)	Complied
	International Tonnage Certificate	9HO-0130TM	18.02.2009	Nippon Kaiji Kyokai	Nil	Not applicable
	International Load Line Certificate	09HO2654-LLC	16.04.2009 - 20.02.2014	Nippon Kaiji Kyokai	(3)	Complied
	Certificate of Classification	091513	10.09.2009 - 20.02.2014	Nippon Kaiji Kyokai	(7)	Complied
	Safety Construction Certificate	09KL0541-SCC	20.06.2009 - 20.02.2014	Nippon Kaiji Kyokai	(10)	Complied
Shin Yang Shipping / Danum 36	Certificate of Malaysian Registry	330656	07.04.2006	Registrar of Malaysian Ships	Nil	Not applicable
	Ship Sanitation Control Exemption Certificate	189382	12.08.2009	Government of Malaysia	(1)	Complied
	International Tonnage Certificate	STLO-0594	26.12.2005	Bureau Veritas	Nil	Not applicable
	International Load Line Certificate	SG10/RRX/20060530225IPM	30.05.2006 - 15.02.2011	Bureau Veritas	(3)	Complied
	Certificate of Classification	SG10/RRX/200605302444PM	30.05.2006 - 15.02.2011	Bureau Veritas	(7)	Complied
	Safety Construction Certificate	SG10/RRX/200605302731PM	30.05.2006 - 15.02.2011	Bureau Veritas	(10)	Complied



Company No. 666062-A

4. INFORMATION ON OUR GROUP (Cont'd)

Company / Vessel	Description of approval / licence / permit	Licence / Reference No.	Date of issuance or commencement / expiry	Authority	Major Conditions Imposed	Status of compliance
Marsol (L) / WM Water-master II	Certificate of Malaysian Registry	330641	15.11.2005	Registrar of Malaysian Ships	Nil	Not applicable
	Ship Sanitation Control Exemption Certificate	189355	12.08.2009	Government of Malaysia	(1)	Complied
	International Tonnage Certificate	STLO-0537	21.07.2005	Bureau Veritas	Nil	Not applicable
	International Load Line Certificate	SGIO/RRX200511040546PM	04.11.2005 - 25.07.2010	Bureau Veritas	(3)	Complied
	Certificate of Classification	SGIO/RRX200511040454PM	04.11.2005 - 25.07.2010	Bureau Veritas	(7)	Complied
	Safety construction certificate	DBA0/2009/J0552	22.06.2009 - 22.06.2010	Bureau Veritas	(10)	Complied
Shin Yang Shipping / Danum 38	Certificate of Malaysian Registry	330658	05.04.2006	Registrar of Malaysian Ships	Nil	Not applicable
	Ship Sanitation Control Exemption Certificate	189381	12.08.2009	Government of Malaysia	(1)	Complied
	International Tonnage Certificate	STLO-4595	26.12.2005	Bureau Veritas	Nil	Not applicable
	International Load Line Certificate	SGIO/RRX/2006-3141008AM	14.03.2006 - 05.01.2011	Bureau Veritas	(3)	Complied
	Certificate of Classification	SGIO/RRX/200603140650AM	14.03.2006 - 05.01.2011	Bureau Veritas	(7)	Complied
	Safety construction certificate	SGIO/RRX/200603141329AM	06.01.2006 - 05.01.2011	Bureau Veritas	(10)	Complied
Marsol (L) / WM Naition-wide II	Certificate of Malaysian Registry	330612	13.03.2006	Registrar of Malaysian Ships	Nil	Not applicable
	Ship Sanitation Control Exemption Certificate	189354	12.08.2009	Government of Malaysia	(1)	Complied
	International Tonnage Certificate	STLO-0589	02.12.2005	Bureau Veritas	Nil	Not applicable
	International Load Line Certificate	SGIO/RRX/200601254553PM	25.01.2006 - 01.12.2010	Bureau Veritas	(3)	Complied
	Certificate of Classification	SGIO/RRX/200601254353PM	25.01.2006 - 01.12.2010	Bureau Veritas	(7)	Complied
	Safety Construction Certificate (Attestation)	KLP0/2006/JO199/SC	06.12.2006	Bureau Veritas	(10)	Complied